



# BACH CHRISTMAS

**December 3 + 4 + 5, 2021**

HANDEL+HAYDN SOCIETY

I love *wbur* because...

**“It’s my  
guiding star in  
a constellation  
of news.”**

**wbur**

**npr**



# WELCOME TO H+H

Bach Christmas is the Handel and Haydn Society's warm and joyous holiday tradition. While our annual Handel *Messiah* is the kickoff to the season, today's concert is a musical celebration fit for December. Each year, we mix some of J.S. Bach's best-loved music with seasonal works by lesser-known composers and other Bach family members. In the hands and voices of H+H's orchestra and chorus, these pieces sound as fresh and moving as when the music was first written.



PHOTO: GRETJEN HELENE

This year we present Bach's glorious Magnificat, one of his most popular choral works, which captures the anticipation, rejoicing, and exultation of the holidays. Then we travel back to Giovanni Gabrieli, a 16th-century Italian composer, whose "Hodie Christus natus est" found its way to the music library of Bach's church in Leipzig and likely served as a source of inspiration. Next we return to Bach, with his Cantata *Unser Mund sei voll Lachens* (*May Our Mouth be full of Laughter*), first performed on Christmas Day 1725, and played for the first time this weekend by H+H. We conclude with the next generation of the Bach family, via C.P.E.'s *Heilig*, which combines a "Chorus of Angels" with the "Chorus of People."

I'm very happy to welcome Raphaël Pichon for his H+H debut. In Paris, he is the founder and director of the acclaimed ensemble Pygmalion, with whom he has widely concertized and recorded for Harmonia Mundi. I'd also like to welcome mezzo-soprano Clara Osowski, and bass-baritone Christian Immler in their H+H debuts. We welcome back soprano Lauren Snouffer and tenor Zachary Wilder, as well as H+H's own musical family member, soprano Sonja DuToit Tengblad.

During this season of giving, I want to offer tremendous thanks to everyone who has generously supported H+H in 2021, an unprecedented year in our history. Your generosity allowed us to thrive and grow through all the challenges we faced, and return to live performance.

On behalf of everyone at H+H, I wish you a very happy holiday!

A handwritten signature in dark ink, appearing to read "David Snead". The script is fluid and cursive, with a large initial 'D'.

David Snead  
President and CEO

# GET LOST.



Classical 99.5

**A GBH Station**

on-air • online • in the app | [classicalwcrb.org](http://classicalwcrb.org)



# TABLE OF CONTENTS

<b>5</b>	<b>The Handel and Haydn Society</b>
<b>7</b>	<b>Harry Christophers, CBE</b>
<b>10</b>	<b>Bach Christmas</b>
13	Program Notes
19	Program Texts
22	Artist Profiles
25	Handel and Haydn Society Orchestra
27	Handel and Haydn Society Chorus
<b>29</b>	<b>Governance</b>
<b>31</b>	<b>Donors</b>
<b>42</b>	<b>Administration</b>
<b>43</b>	<b>Venue Patron Information</b>
<b>44</b>	<b>General Information</b>



**TICKETS AVAILABLE NOW!**

HANDEL+HAYDN SOCIETY

# GALA

**HONORING  
HARRY CHRISTOPHERS**



Through 13 stirring seasons as H+H's artistic director, Harry has transformed countless lives through his passion and leadership.

To celebrate and honor Harry and his incredible legacy, we encourage your participation in this special dinner and concert.

For more information, including ticket and table sponsorship details, visit [handelandhaydn.org/gala](http://handelandhaydn.org/gala).

---

**MAY 9, 2022**  
**SYMPHONY HALL**

# THE HANDEL AND HAYDN SOCIETY

Boston's Grammy-winning Handel and Haydn Society performs Baroque and Classical music with a freshness, a vitality, and a creativity that inspires all ages. H+H has been captivating audiences for 207 consecutive seasons (the most of any performing arts organization in the United States), speaking to its singular success at converting new audiences to this extraordinary music, generation after generation.

H+H performed the "Hallelujah" chorus from Handel's *Messiah* in its first concert in 1815, gave the American premiere in 1818, and ever since has been both a musical and a civic leader in the Boston community. During the Civil War, H+H gave numerous concerts in support of the Union Army (H+H member Julia Ward Howe wrote "The Battle Hymn of the Republic") and on January 1, 1863, H+H performed at the Grand Jubilee Concert celebrating the enactment of the Emancipation Proclamation. Two years later, H+H performed at the memorial service for Abraham Lincoln.

Today, H+H's Orchestra and Chorus delight more than 50,000 listeners annually with a nine-week subscription series at Symphony Hall and other leading venues. Through the Karen S. and George D. Levy Education Program, H+H supports seven youth choirs of singers in grades 2-12, and provides thousands of complimentary tickets to students and communities throughout Boston, ensuring the joy of music is accessible to all.

H+H's numerous free community concerts include an annual commemoration of the original 1863 Emancipation Proclamation concert on December 31 of every year, in collaboration with the Museum of African American History.

The artistic director of the Handel and Haydn Society is Harry Christophers, who is also founding artistic director of The Sixteen in London. Under Christophers's leadership, H+H has released 15 CDs on the CORO label and has toured nationally and internationally.

In all these ways, H+H fulfills its mission to inspire the intellect, touch the heart, elevate the soul, and connect all of us with our shared humanity through transformative experiences with Baroque and Classical music.

## Leadership

Robert N. Shapiro  
*Chair*

Harry Christophers, CBE  
*Artistic Director*  
*The Bicentennial Chair*

David Snead  
*President and CEO*

## Artistic

Ian Watson  
*Associate Conductor*

Scott Allen Jarrett  
*Resident Conductor, Chorus*

Anthony Trecek-King  
*Resident Conductor, Chorus*

Reginald Mobley  
*Programming Consultant*

## Youth Choruses Conductors

Alyson Greer Espinosa  
*Chorus of Sopranos and Altos*  
*and Chamber Choir*

Jennifer Kane  
*Treble Chorus, Youth Chorale,*  
*and Concert Choir*

Kevin McDonald  
*Chorus of Tenors and Basses*

Nurt Villani  
*New Voices*

CARL PHILIPP EMANUEL BACH

# *The Complete Works*

---



*“It seems to me that music primarily  
must touch the heart . . .”*

—C.P.E. Bach, from his *Autobiography* (1773)

---

*Published by The Packard Humanities Institute*  
cpebach.org



# HARRY CHRISTOPHERS, CBE

## ARTISTIC DIRECTOR

The 2021–22 Season marks Harry Christophers's 13th year as artistic director of the Handel and Haydn Society. Since his appointment, Mr. Christophers and H+H have enjoyed an ambitious artistic journey including showcases of works premiered in the United States by H+H since 1815, broad education programming, community partnerships, concerts at the Metropolitan Museum of Art and at Tanglewood, and a series of recordings on the CORO label. Between 2015 and 2016, Mr. Christophers and H+H celebrated the organization's Bicentennial, and he now proudly leads the ensemble in its third century of music making.



PHOTO: STU ROSENBERG

Mr. Christophers is known internationally as founder and conductor of the British choir and period-instrument ensemble The Sixteen, which he has directed throughout Europe, America, Australia, and Asia, gaining a distinguished reputation for his work in Renaissance, Baroque, and 20th- and 21st-century music. In 2000 he instituted The Choral Pilgrimage, a tour of British cathedrals from York to Canterbury.

He has recorded over 120 titles for which he has won numerous awards, including the coveted Gramophone Award for early music and the prestigious Classical Brit Award. His CD *IKON* was nominated for a 2007 Grammy and his second recording of Handel's *Messiah* on The Sixteen's label CORO won the prestigious MIDEM Classical Award. In 2009, he received one of classical music's highest accolades, the Classic FM Gramophone Awards Artist of the Year Award, and The Sixteen won the Baroque Vocal Award for Handel *Coronation Anthems*, a CD which also received a 2010 Grammy Award nomination, as did Palestrina, Vol. 3, in 2014, and *Monteverdi Vespers of 1610* in 2015. From 2007 he has featured with The Sixteen in the highly successful BBC television series *Sacred Music*, presented by actor Simon Russell Beale. The latest hour-long program, devoted to Monteverdi's *Vespers*, screened in 2015.

Mr. Christophers is principal guest conductor of the Granada Symphony Orchestra and a regular guest conductor with the Academy of St. Martin in the Fields. In October 2008 he was awarded an honorary degree of doctor of music from the University of Leicester. He is an honorary fellow of Magdalen College, Oxford, and also of the Royal Welsh Academy for Music and Drama, and was awarded a CBE (Commander of the Order of the British Empire) in the 2012 Queen's Birthday Honors.

# EXPERIENCE THE 2021-22 SEASON

## HARRY CHRISTOPHERS'S GRAND FINALE

### BEETHOVEN SYMPHONY NO. 7

JAN 7 + 9  
SYMPHONY HALL

**Václav Luks**, *conductor*  
**H+H Orchestra**

**Bologne**: Overture to *L'amant Anonyme*

**Voříšek**: Symphony in D Major  
**Beethoven**: Symphony No. 7

### HAYDN + MOZART

JAN 28 + 30  
SYMPHONY HALL

**Harry Christophers**, *conductor*  
**Aisslinn Nosky**, *violin*  
**Mary Bevan**, *soprano*  
**Catherine Wyn-Rogers**, *mezzo-soprano*  
**Jeremy Budd**, *tenor*  
**Sumner Thompson**, *baritone*  
**H+H Orchestra and Chorus**

**Haydn**: Symphony No. 103, *Drum Roll*  
**Mozart**: Violin Concerto No. 1  
**Haydn**: *Theresienmesse*

### BACH + VIVALDI GLORIA

APR 1 + 3  
SYMPHONY HALL

**Jonathan Cohen**, *conductor*  
**Joëlle Harvey**, *soprano*  
**TBD**, *alto*  
**Nicholas Phan**, *tenor*  
**Tyler Duncan**, *baritone*  
**H+H Orchestra and Chorus**

**J.S. Bach**: Orchestral Suite No. 1  
**Vivaldi**: Gloria, RV 589  
**C.P.E. Bach**: Magnificat

### HAYDN THE CREATION

APR 29 + MAY 1  
SYMPHONY HALL

**Harry Christophers**, *conductor*  
**Joëlle Harvey**, *soprano*  
**Robert Murray**, *tenor*  
**Matthew Brook**, *bass-baritone*  
**H+H Orchestra and Chorus**

**Haydn**: *The Creation*





HANDEL+HAYDN SOCIETY

HARRY CHRISTOPHERS ARTISTIC DIRECTOR

**SUBSCRIPTIONS  
AVAILABLE NOW**

*handelandhaydn.org*

617.262.3605

# BACH CHRISTMAS

**Friday, December 3, 2021 at 7:30pm**  
**St. Cecilia Parish, Boston**

2,547th Concert

**Saturday, December 4, 2021 at 7:30pm**  
**Sunday, December 5, 2021 at 4:00pm**  
**First Church in Cambridge**

2,548th Concert

2,549th Concert

**Raphaël Pichon**, *conductor*

**Lauren Snouffer**, *soprano*

**Sonja DuToit Tengblad**, *soprano*

**Clara Osowski**, *mezzo-soprano*

**Zachary Wilder**, *tenor*

**Christian Immler**, *bass-baritone*

**Handel and Haydn Society Orchestra and Chorus**

---

## **Magnificat in D Major, BWV 243**

Johann Sebastian Bach  
(1685–1750)

Lauren Snouffer, *soprano*

Sonja DuToit Tengblad, *soprano*

Clara Osowski, *mezzo-soprano*

Zachary Wilder, *tenor*

Christian Immler, *bass-baritone*

## **"Hodie Christus natus est"** **(Christ is Born Today)**

Giovanni Gabriel  
(ca.1554/57–1612)

## **Cantata BWV 110, Unser Mund sei voll Lachens** **(May Our Mouth be Full of Laughter)**

J.S. Bach

Lauren Snouffer, *soprano*

Clara Osowski, *mezzo-soprano*

Zachary Wilder, *tenor*

Christian Immler, *bass-baritone*

## **Heilig, Wq. 217**

Carl Philipp Emanuel Bach  
(1714–1788)



# PROGRAM SPONSORS

The artists' appearances are made possible by the generous support of the following individuals:

Nancy and Michael Tooke, *sponsors of Raphaël Pichon, conductor*

Alpine and Donald Bird, *sponsors of Sonja DuToit Tengblad, soprano*

John J. Winkleman, *sponsor of Clara Osowski, mezzo-soprano*

Amy and Anthony Moosey, *sponsors of Zachary Wilder, tenor*

James F. Millea and Mary Ellen Bresciani, *sponsors of Christian Immler, bass-baritone*

Anne and David Gergen, *season sponsors of Guy Fishman, cello*

Jane E. Manilych and Prof. W. Carl Kester, *sponsors of the H+H Orchestra*

Jane and Christopher Carlson, *sponsors of the H+H Chorus*

The Handel and Haydn Society is funded in part by the Massachusetts Cultural Council and the National Endowment for the Arts.

The Handel and Haydn Society Chorus is funded in perpetuity by Jane and Wat Tyler.

The Handel and Haydn Society is proud to be a Principal Sponsor of the Boston Singers' Relief Fund.



Program book printed by the Graphic Group.

---

## Related Events


Musically Speaking with Teresa Neff

*Christopher Hogwood Historically Informed Performance Fellow*


Friday and Saturday at 6:45pm on stage (no presentation Sunday)

## Connect with H+H

 [facebook.com/handelandhaydn](https://facebook.com/handelandhaydn)

 [twitter.com/handelandhaydn](https://twitter.com/handelandhaydn)

 [instagram.com/handelandhaydn](https://instagram.com/handelandhaydn)

 [youtube.com/handelandhaydn](https://youtube.com/handelandhaydn)

We ask for your help in creating a positive concert experience for the performers and those around you. Cell phones and other audible devices should be switched off during the concert. Photography and recording of any kind are strictly prohibited. Food and beverages are not permitted inside the hall.

Large print programs are available at the patron information table in the lobby.

The concert runs 1 hour 20 minutes with no intermission.

# THE WORLD BEYOND



Giovanni Gabrieli  
b. Venice?, ca. 1554/7  
d. Venice, Aug. 1612



Johann Sebastian Bach  
b. Eisenach, Mar. 21, 1685  
d. Leipzig, Jul. 28, 1750



Carl Philipp Emanuel Bach  
b. Weimar, Mar. 8, 1714  
d. Hamburg, Dec. 14, 1788

- 1544** After spending 13 years enslaved in the Ottoman Empire, Croatian musicologist Georgijević Bartolomej publishes *De Turvarum ritu et caermoniis*, one of the first books in Europe to describe musical practices in Ottoman society.
- 1585** Gabrieli is appointed second organist at St. Mark's Basilica in Venice. His uncle and teacher Andrea Gabrieli is the first organist.
- 1604** An unlikely group of French settlers, including nobility, former prisoners, Catholics, and Huguenots, arrive on St. Croix Island (today on the border of New Brunswick and Maine) in June. The colony lasts about one year but is considered the beginning of European settlement in Canada.
- 1609** The German-born composer Heinrich Schütz travels to Venice to study with Giovanni Gabrieli. He returns to Germany only after Gabrieli's death in 1612.
- 1611** A set of 16 Magnificat settings by the Spanish-born composer Hernando Franco are presented to the cathedral in Mexico City, where Franco was maestro di capilla from 1575 until his death 10 years later.
- 1650** With the publication of *The Tenth Muse*, Anne Dudley Bradstreet becomes America's first published poet as well as the first female poet published in both England and the New World.
- 1697** Muhammad Amīn begins writing *Muhit al-Tavarikh* (*The Sea of Chronicles*), a political, social, and cultural history of Central Asia in the 17th century.
- 1723** Johann Sebastian Bach and his family arrive in Leipzig on May 22. His Magnificat is first performed on December 25.

# PROGRAM NOTES

## TRADITIONS SHARED



Bach window, St. Thomas Church, Leipzig

Although they lived more than 400 miles apart and were separated by more than a century, Johann Sebastian Bach knew the vocal music of Giovanni Gabrieli. The specific connection lies in a collection of sacred motets (choral works) published in 1618. The *Florilegium portense*—which included Giovanni Gabrieli’s “Hodie Christus natus est” (“Christ is Born Today”)—was a source of service music at St. Thomas’s Church in Leipzig beginning with Sethus Calvisius, who served as Cantor from 1594 to 1615 and who compiled much of the collection. Bach also used this motet collection when he was cantor at the beginning of the 18th century. As a student of his father, Carl Philipp Emanuel Bach surely would have been familiar with this collection as well, and his double chorus *Heilig* is a fitting part of this lineage.

### **Johann Sebastian Bach: Magnificat in D Major, BWV 243**

When Bach arrived in Leipzig in 1723, the city was thriving and a hub for commerce and music. After the devastation caused by the Thirty Years’ War and a plague in the 17th century, Leipzig’s population and influence grew. In the 18th century, Leipzig’s trade fairs attracted visitors from Germany and beyond; the city was renowned for its instrument builders and as a center for both secular and sacred music.

In Leipzig, the Magnificat was sung in Latin on feast days, including Easter, Pentecost, and Christmas. Bach's Magnificat (originally in E flat and with added texts specific to Christmas) was first performed on December 25, 1723. In later years, Bach revised his Magnificat so that it could be sung on any feast day. The text, taken from Luke's Gospel, is Mary's response upon learning that she is to be the mother of Jesus. Bach upholds the tradition of dividing the text into choruses and arias; he uses the keys and instrumentation to both unite the whole and contrast individual movements.

The graceful elegance of Bach's music complements and highlights Mary's response to being called "blessed" and the mother of Jesus. Each movement for soloist pairs the voice with one or more instruments, but no combination is heard twice. The unique settings reflect the mood of the text with special emphasis given to selected words through melismas (many notes on one syllable of text) and long-held notes. In "Quia respexit," one literally becomes many as the soprano aria blossoms into the full chorus at the words "Omnes generationes" (all generations).

Just as the text, beginning with Mary's acceptance of her future, ruminates on how a single moment can have an impact in ways not easily imagined, Bach acknowledges the importance of the Magnificat to the Lutheran service. In "Suscepit Israel" he accompanies the voices with oboes playing long-held notes. This stunning counterpoint is from a melody traditionally used to sing Martin Luther's German translation of this text.

Another literal representation of the text occurs in the final movement. Before the words "sicut erat in principio" (as it was in the beginning) are sung by the chorus, Bach brings back the instrumental music from the opening of the Magnificat.

### **Giovanni Gabrieli: "Hodie Christus natus est" (Christ is Born Today)**

Venice is an old city that seems to rise out of the sea; its geographical location was key to its political and economic power, both of which rested in commerce. An independent city, Venice, or the Republic of Venice, was ruled by an elected official, the doge. Although strong musical traditions did not develop in the city until about the 15th century, by the turn of the 17th century, Venice was one of Italy's most important musical centers.

Fundamental to the development of Venice's musical life were celebrations and religious services, including the *scuole grandi*, or religious confraternities, each of which employed a small group of vocalists and instrumentalists on at least a part-time basis. Other musicians might be employed by the doge and the city maintained a town band of brass instruments who not only played for celebrations but were also responsible for alerting Venetian citizens to dangers (such as fire) and announcing important visitors. Central to both religious and civic celebrations in the city, St. Mark's was the doge's private chapel from its construction in the 9th century until the early 19th century. In the 16th century, the positions for a *maestro di cappella* (master of the chapel or music director) and two organists were established.



Giovanni Gabrieli studied music with his uncle Andrea, who was an organist at St. Mark's. Giovanni followed in his uncle's footsteps, including spending the first years of his career in Munich in service to Duke Albrecht V. After the duke's death, Giovanni returned to Venice and, in 1585, was appointed second organist at St. Mark's. About this same time, he also became organist for the confraternity Scuola Grande di San Rocco; Gabrieli held both positions until his death in 1612.

As a composer, Gabrieli focused on sacred and instrumental music; he preferred to write for the larger ensembles employed at St. Mark's for religious and civic ceremonies. His music influenced instrumental composition in Venice and northern Europe, especially German composers, by perfecting what can be thought of as a local tradition. Often associated with musical performances at St. Mark's in the 16th century, *cori spezzati* (also known as *coro spezzato* or "split choirs") is the term used to describe compositions in which the ensemble is divided into distinct groups or choirs. Often physically separated within a building, the groups perform in alternation as well as together. Gabrieli refined the interaction between *cori spezzati* groups and frequently wrote musically distinctive passages for each group, giving this antiphonal style of composition a more sophisticated sound.

Gabrieli's "Hodie Christus natus est" (Christ is Born Today) for eight voices is a joyous exclamation propelled by the complexities and richness of music sung between two choirs. Interestingly, it is also a contrafactum. In other words, Gabrieli composed this music earlier and then later substituted a new text. The original, "O che felice giorno" (O such a happy day), was sung in a different musical form on St. Stephen's Day in 1585 and published five years later as a work for eight voices. Later, Gabrieli substituted the sacred text commonly associated with the Magnificat. That piece—the work on today's concert—was published in 1615 in Venice. Three years later this work was published in Leipzig and was part of the collection of motets regularly sung at St. Thomas's in Leipzig.

### **Johann Sebastian Bach: Cantata BWV 110, *Unser Mund sei voll Lachens* (May Our Mouth be Full of Laughter)**

As a gifted organist and composer, Johann Sebastian Bach was well prepared to assume a leading role in any of the posts (church, court, town) available to a German musician in the early 18th century. He was trained in writing counterpoint (creating and combining multiple melodies) and he understood how to blend different colors or timbres to create strikingly memorable sounds. He used this knowledge both to diversify and unify his large-scale compositions.

The opening of Cantata 110, first performed on Christmas Day 1725, may sound familiar. It is the same music that opens Bach's Orchestral Suite No. 4. Scholars still debate which work was written first; however, the emotional release—the joyful abandon—is unmistakable in the "laughter" of the vocal and instrumental lines. Bach also specifies that parts of this opening movement should be sung by the whole chorus (*con ripieni*) while others should be sung by a smaller group (*senza ripieni*).

With the first aria, Bach shifts to a more fluid line between two flutes in imitation. The tenor joins this texture singing of how “thoughts and meditations soar aloft.” The aria for soloist and oboe d’amore, an instrument that matches the range and even quality of the alto voice, is a rumination centered less on the anticipation of Christmas and more on the thoughts of the believer. The duet for soprano and tenor tells of the angels announcing the birth to the shepherds and uses music from the original version of Bach’s Magnificat in E-flat, BWV 243a. After being silent since the opening movement, the trumpets now return to introduce the bass aria, “Wachet auf, Wachet auf!” (Arise!). This is followed by a four-part setting of the chorale “Wir Christenleut.” It easy to imagine the congregation eagerly joining in this hymn verse before settling in to listen to the sermon for the day. The text begins with “alleluia,” a fitting conclusion to the cantata, but the tone of the chorale is more somber, reflecting other verses in this hymn as well as the final line, “that we should never forget at any time.”

### **Carl Philipp Emanuel Bach, *Heilig (Holy)*, W. 217**

The second surviving son of Johann Sebastian and Maria Barbara Bach, Carl Philipp Emanuel developed his own compositional style, which explored new means of expression through melody, harmony, and rhythm. Emanuel’s influences were wide-ranging and included his father, Handel, and Haydn (whom he, in turn, influenced).

In 1738, Emanuel was hired by Frederick, then Crown Prince of Prussia, as a keyboard player, and two years later was appointed as a court musician for the newly crowned king. Bach remained with Frederick’s court for almost 30 years, leaving in 1768 to accept a position in Hamburg—a post once held by his godfather Georg Philipp Telemann and analogous to the position his father held in Leipzig.

In Hamburg in the second half of the 18th century, public concerts were popular, and the concert on April 9, 1786—benefitting an organization of doctors who treated the poor for free—only added to their renown. For this, his last public concert, Bach programmed the Credo from his father’s Mass in B Minor, the “Hallelujah” Chorus and one other movement from Handel’s *Messiah*, and three of his own works, including his double-chorus *Heilig* to close the concert.

Composed in 1776 and published three years later, *Heilig* had already become an important part of celebrations in Hamburg. Bach sets text from the Old Testament Book of Isaiah for two separate choirs, and he prefaces this with an introduction for alto solo. The interplay of the choruses—one called the “Chorus of Angels” and the other the “Chorus of People”—combined with the instrumental accompaniment is both haunting and dramatic. The whole culminates in a fugue for both choruses. Here, Bach incorporates the hymn “Herr Gott, dich loben wir” (“We praise thee, O Lord”), which Martin Luther adapted as the German counterpart to the Latin *Te Deum*.

© 2021 Teresa M. Neff, PhD

*Christopher Hogwood Historically Informed Performance Fellow*

# PERIOD INSTRUMENT SPOTLIGHT

## FLUTE



Illustration from Jacques Hotteterre's *Principes de la flute traversiere*, 1728

From ancient instruments to modern ones, flutes come in many shapes and sizes. But all share one common characteristic: sound is produced when air, controlled by the player's lips, passes over an opening and through a tube.

Flutes in the 18th century were made of wood and designed to maximize flexibility as well as dynamic nuance. Sometimes referred to as traversi to distinguish them from recorders, these instruments often had only one or two keys to extend the range of the instrument.

With a sound often described as sweet, the flute was a popular instrument in the 18th century. Flutes are part of the orchestral sound in the opening of Cantata 110 and are featured in the tenor aria "Ihr Gedanken und ihr Sinnen."

Also, part of the orchestral texture of Bach's Magnificat in D Major, the flutes plus muted strings set the soothing tone of the "Et misericordi." Later, the flutes establish a more hopeful mood in the alto aria, "Esurientes."



# MASSART

MASSACHUSETTS COLLEGE  
OF ART AND DESIGN

[massart.edu/ce](https://massart.edu/ce)

WINTER AND SPRING 2022

PROFESSIONAL AND  
CONTINUING EDUCATION

ADULTS | YOUTH | DESIGN CERTIFICATES

Give the gift of art – classes in animation, photography, ceramics, fashion, painting, and more.

Contact us at [ce@massart.edu](mailto:ce@massart.edu)



# PROGRAM TEXTS

## J.S. Bach: Magnificat in D Major, BWV 243

### **Chorus**

Magnificat anima mea Dominum.

My soul doth magnify the Lord.

### **Aria (soprano)**

Et exsultavit spiritus meus in Deo salutari meo.

And my spirit hath rejoiced in God my savior.

### **Aria (soprano)**

Quia respexit humilitatem ancillae suae; ecce enim ex hoc beatam me dicent

For he had regarded the lowliness of his handmaiden; for behold, from henceforth shall call me blessed

### **Chorus**

Omnes generationes.

All generations.

### **Aria (bass)**

Quia fecit mihi magna qui potens est, et sanctum nomen eius.

For he that is mighty hath magnified me, and holy is his name.

### **Duet (alto and tenor)**

Et misericordia a progenie in progenies timentibus eum.

And his mercy is on them that fear him throughout all generations.

### **Chorus**

Fecit potentiam in brachio suo, dispersit superbos mente cordis sui.

He hath showed strength with his arm; he hath scattered the proud in the imagination of their hearts.

### **Aria (tenor)**

Deposuit potentes de sede et exaltavit humiles.

He hath put down the mighty from their seat, and hath exalted the humble and meek.

### **Aria (alto)**

Esurientes implevit bonis et divites dimisit inanes.

He hath filled the hungry with good things and the rich he hath sent empty away.

### **Chorus**

Suscepit Israel puerum suum recordatus misericordiae suae.

He remembering his mercy hath holpen his servant Israel.

### **Chorus**

Sicut locutus est ad Patres nostros, Abraham et semini eius in saecula.

As he promised to our forefathers, Abraham and his seed forever.

### **Chorus**

Gloria Patri, gloria Filio, gloria et Spiritui Sancto! Sicut erat in principio et nunc et semper et in saecula saeculorum. Amen.

Glory be to the Father, glory be to the Son, and glory be to the Holy Ghost! As it was in the beginning, is now, and ever shall be, world without end. Amen.

## **Gabrieli: "Hodie Christus natus est"**

Hodie Christus natus est:  
Hodie Salvator apparuit:  
Hodie in terra canunt Angeli,  
laetantur Archangeli  
Hodie exsultant justī, dicentes:  
Gloria in excelsis Deo.  
Alleluia.

Today Christ is born:  
Today the Savior appeared:  
Today on Earth the Angels sing,  
archangels rejoice:  
Today the righteous rejoice, saying:  
Glory to God in the highest.  
Alleluia.

## **J.S. Bach: Cantata BWV 110, *Unser Mund sei voll Lachens***

### **Chorus**

Unser Mund sei voll Lachens und  
unsre Zunge voll Rühmens. Denn  
der Herr hat Großes an uns getan.

Make our mouth full with laughter  
and make our tongue full with  
praises. For the Lord hath great  
things for us achieved.

### **Aria (tenor)**

Ihr Gedanken und ihr Sinnen,  
Schwinget euch anitz von hinnen,  
Steiget schleunig himmeln  
Und bedenkt, was Gott getan!  
Er wird Mensch, und dies allein,  
Dass wir Himmels Kinder sein.

All ye thoughts and all ye senses,  
lift yourselves aloft this moment,  
soaring swiftly heavenward,  
and bethink what God hath done!  
He is man, for this alone,  
that we heaven's children be.

### **Recitative (bass)**

Dir, Herr, ist niemand gleich. Du  
bist groß und dein Name ist groß  
und kannst's mit der Tat beweisen.

Thee, Lord, is no one like. Thou art  
great and thy name, too, is great and  
thou with thy works canst prove it.

### **Aria (alto)**

Ach Herr, was ist ein Menschenkind,  
Dass du sein Heil so schmerzlich  
suchest?  
Ein Wurm, den du verfluchest,  
Wenn Höll und Satan um ihn sind;  
Doch auch dein Sohn, den Seel  
und Geist  
Aus Liebe seinen Erben heißt.

Ah Lord, what is a child of man  
that thou wouldst through such  
pain redeem him?  
A worm thy curse tormenteth  
while hell and Satan round him  
stand; but yet, thy Son, whom  
heart and soul  
in love call their inheritance.

### **Duet (soprano, tenor)**

Ehre sei Gott in der Höhe und  
Friede auf Erden und den  
Menschen ein Wohlgefallen!

Glory to God in the highest and  
peace be on earth, now, and to  
mankind a sign of favor!

### **Aria (bass)**

Wacht auf, ihr Adern und ihr Glieder,  
Und singt dergleichen Freudenlieder,  
Die unserm Gott gefällig sein.  
Und ihr, ihr andachtsvollen Saiten,  
Sollt ihm ein solches Lob bereiten,

Wake up, ye nerves and all ye  
members, and sing those very  
hymns of gladness which to our  
God with favor come. And ye, ye  
strings of deep devotion, to him a

Dabei sich Herz und Geist erfreun.

song of praise now offer in which  
the heart and soul rejoice.

### **Chorale**

Alleluja! Gelobt sei Gott,  
Singen wir all aus unsers  
Herzens Grunde.  
Denn Gott hat heut gemacht  
solch Freud,  
Die wir vergessen solln zu  
keiner Stunde.

Alleluia! All praise to God,  
sing we all from our very  
heart's foundation.  
For God today hath wrought  
that joy,  
which we shall not forget at  
any hour.

### **C.P.E. Bach: *Heilig* (Holy), Wq. 217**

Heilig, heilig, heilig ist Gott,  
der Herr Zebaoth!  
Alle Lande sind seiner Ehren voll.  
Herr Gott, dich loben wir!  
Herr Gott, wir danken dir!

Holy, holy, holy is  
the Lord of hosts!  
The whole earth is full of his glory.  
We praise thee, O God!  
We thank thee, O God!

## ARTIST PROFILES



### **Raphaël Pichon, conductor**

Raphaël Pichon began in music with the violin, piano, and singing, training in various Parisian conservatories. In 2006 he founded Pygmalion, a choir and period-instrument orchestra, which quickly distinguished itself by the singularity of its projects, including Bach's *Missae Breves*, late versions of Rameau's lyrical tragedies, and Mozart rarities. Alongside his ensemble, Mr. Pichon has performed at the Philharmonie de Paris, the Château de Versailles, the BBC Proms, the Konzerthaus in Vienna, and the Beijing Music Festival.

Recent projects include Luigi Rossi's *Orfeo* at the Opéra national de Lorraine and at the Opéra royal du Château de Versailles, the spatialization of Monteverdi's *Vespro della Beata Vergine*, a cycle of artistic encounters around Bach's cantatas at the Philharmonie de Paris, and Bach's complete Motets and B-minor Mass. Invited to the Festival d'Aix-en-Provence in 2018 to conduct *The Magic Flute*, Mr. Pichon returned in 2019 for a scenic creation of Mozart's Requiem. As a guest conductor, he has led the Mozarteum Orchester at the Salzburg Festival, the Deutsches Symphonies-Orchester, Violons du Roy de Québec, and the Freiburger Barockorchester. His numerous recordings are now released exclusively by Harmonia Mundi, and he is an officer in the Order of Arts and Letters.



### **Lauren Snouffer, soprano**

Recognized for her artistic curiosity spanning the music of Claudio Monteverdi through to Missy Mazzoli, Lauren Snouffer is celebrated as one of the most versatile sopranos on the international stage. This season she makes her debut at the Opéra national du Rhin in the lead role of *The Snow Queen* by Hans Abrahamsen, returns to Houston Grand Opera for *Dialogues des Carmélites*, and appears in two new productions with the Opernhaus Zürich: the title role in the world premiere of *Girl with a Pearl*

*Earring* by Stefan Wirth and Argene in Pergolesi's *L'Olimpiade*. She joins the Dallas Opera for Opera Galas and concertizes with Patrick Dupré Quigley and Seraphic Fire in tour performances of Pergolesi's *Stabat Mater*. She returns to Mercury Chamber Orchestra for a program of Vivaldi and Handel and appears with Ars Lyrica Houston in fully-staged performances of Purcell's *Dido and Aeneas*.

On the concert stage, Ms. Snouffer has appeared the Cleveland Orchestra, the Baltimore Symphony Orchestra, the San Francisco

Symphony, the Orchestra of St. Luke's, and the Rotterdam Philharmonic, and appeared in George Benjamin's *Written on Skin* at the Tanglewood Festival of Contemporary Music and with the Théâtre du Capitole de Toulouse and Opera Philadelphia.

PHOTO: NATALIE PINAZZO FOX



### **Sonja DuToit Tengblad, *soprano***

Recent highlights for Sonja DuToit Tengblad include Shostakovich Symphony No. 14 with A Far Cry, Mahler's 2nd Symphony with the Boston Philharmonic, Barber's *Knoxville: Summer of 1915* with the Boston Landmarks Orchestra, Monteverdi's *L'incoronazione di Poppea* and *Il ritorno d'Ulisse in patria* with Boston Baroque, Francesca Caccini's *Alcina* with the Boston Early Music Festival, Handel's *Messiah* with the Rhode Island Philharmonic, Puccini's *Suor Angelica* with the Lorelei Ensemble and the Boston Symphony

Orchestra, Carnegie Hall and Lincoln Center debuts with the New York City Chamber Orchestra, and Bach's *St. John Passion* and Purcell's *Fairy Queen* and *Dido and Aeneas* with H+H.

Ms. Tengblad performs with the Lorelei Ensemble, Blue Heron, and the Grammy-winning ensemble Conspirare for their national tours of *Considering Matthew Shepard*. Upcoming highlights include a national tour of Julia Wolfe's *Her Story* with Lorelei, as well as a climate change-centered program with Calliope's Call.

PHOTO: MICHAEL HAUG



### **Clara Osowski, *mezzo-soprano***

Clara Osowski is an active soloist and chamber musician throughout the United States and Europe and was a recipient of the prestigious 2018-19 McKnight Artist Fellowships for Musicians administered by MacPhail Center for Music in Minneapolis. Engagements in 2021-22 include Handel's *Messiah* with the Kansas City Symphony, Beethoven Symphony No. 9 with the Milwaukee Symphony, and her London debut at Wigmore Hall. Last season she debuted with the Minnesota Opera in their filmed production of Britten's

*Albert Herring* as Mrs. Herring, and appeared in recital with Wu Han & Friends for the Schubert Club in St. Paul.

Performance highlights include her debut with the Milwaukee Symphony, Mid-Columbia Symphony, St. Paul Civic Orchestra, Tulsa Signature Symphony, Winona Symphony Orchestra, Winston Salem Symphony, Back Bay Chorale, and the Mobile Symphony Orchestra. Ms. Osowski is a frequent collaborator of the Metropolitan Symphony Orchestra, and with them she has performed Mahler's Symphony No. 2 and Dominick Argento's orchestral song cycles *Casa Guidi* and *A Few Words About Chekhov*.



### **Zachary Wilder, *tenor***

Tenor Zachary Wilder is recognized for his work in repertoires covering the 17th and 18th centuries. After his studies, he moved to Boston to take part in the rich music scene, beginning collaborations with the Boston Early Music Festival, Blue Heron, Les Bostonades, and Emmanuel Music. Zachary relocated to France after he was chosen by William Christie in 2013 to take part in Les Arts Florissants' academy for young singers, Le Jardin des Voix.

He now works with leading ensembles including Arpeggiata, Les Arts Florissants, Bach Collegium Japan, Capella Mediterranea, Le Concert d'Astrée, Le Concert Spirituel, English Baroque Soloists, Ensemble Pygmalion, I Gemelli, Le Poème Harmonique, Il Pomo d'Oro, Nederlandse Bachvereniging, and Les Talens Lyriques. Zachary has an extensive discography of over 25 recordings including the recent release of works by Dowland with viol consort Ensemble La Chimera, entitled *Lachrimae*. More information can be found at [www.zacharywilder.com](http://www.zacharywilder.com).



### **Christian Immler, *bass-baritone***

Christian Immler studied with Rudolf Piernay in London and won the International Nadia et Lili Boulanger Competition, which launched his career. Since then, he has performed on stages around the world, from London to Seoul to Sydney. He has sung with the Salzburg, Vancouver, and Lucerne festivals; the Boston Early Music Festival; the BBC Proms; the Amsterdam Concertgebouw; the Théâtre des Champs-Élysées; the Grand Théâtre de Genève; the Theater an der Wien; the New Israeli Opera,

and la Fenice. A keen recitalist, Mr. Immler has been invited to perform at Wigmore Hall in London, the Frick Collection in New York, and the Paris Philharmonie with Helmut Deutsch and Kristian Bezuidenhout.

Fresh off his performance of Don Fernando in Beethoven's *Fidelio* at the Paris Opéra Comique under Raphaël Pichon, Christian Immler's 2021-22 season will see him perform in *Die Zauberflöte* at Opéra de Nancy, as well as in concerts including Telemann's *Orpheus* under René Jacobs with B'Rock Orchestra and Mahler Symphony No. 8 with the Minnesota Orchestra. With more than 50 recordings, Mr. Immler has received several awards including a Grammy award nomination for Steffani's *Niobe* and the Gramophone award in 2020 for his recording of Bach's *St. Matthew Passion* with the Bach Collegium Japan and Masaaki Suzuki.



# HANDEL AND HAYDN SOCIETY ORCHESTRA

## **Violin I**

Aisslinn Nosky<sup>†</sup>

*Concertmaster Chair*

*Endowed in Perpetuity by Rhoda & Paul Joss*

Susanna Ogata

*Assistant Concertmaster*

Abigail Karr

Krista Buckland Reisner

Jane Starkman

## **Violin II**

Christina Day Martinson\*

*Associate Concertmaster*

*Dr. Lee Bradley III Chair*

Julie Leven

Maureen Murchie

Rebecca Nelson

Amy Sims

## **Viola**

Stephen Goist\*

*Chair Funded in Memory*

*of Estah & Robert Yens*

Anne Black

Jenny Stirling

## **Cello**

Guy Fishman\*

*Nancy & Richard Lubin Chair*

Sarah Freiberg

Colleen McGary-Smith

## **Bass**

Heather Miller Lardin\*

*Amelia Peabody Chair*

## **Flute**

Andrea LeBlanc\*

David Ross

## **Oboe**

Debra Nagy\*

*Chair Funded in Part by*

*Dr. Michael Fisher Sandler*

Stephen Bard

David Dickey

## **Oboe d'amore**

Debra Nagy

Stephen Bard

## **Oboe da caccia**

David Dickey

## **Bassoon**

Andrew Schwartz\*

## **Trumpet**

Jesse Levine\*

Paul Perfetti

Christopher Belluscio

## **Timpani**

Jonathan Hess\*

*Barbara Lee Chair*

*in Memory of John Grimes*

## **Organ**

Justin Blackwell\*

*Chair Funded in Perpetuity in Memory*

*of Mary Scott Morton*

## **Harpsichord**

Julia Carey

## **Theorbo**

Paula Chateaufneuf\*

<sup>†</sup>*Concertmaster*

\**Principal*

*String players are listed alphabetically after the principal.*

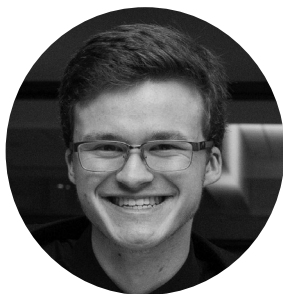


# FIND YOUR VOICE

## JOIN THE H+H YOUTH CHORUSES

- + Vocal Training
- + Choral Performances
- + Musicianship Classes
- + Performances with the Handel and Haydn Society Orchestra and Chorus
- + Seven Ensembles for Grades 2-12

**GENEROUS  
SCHOLARSHIPS  
ARE AVAILABLE!**



## LEARN MORE AT

*[handelandhaydn.org/education/hhyc](http://handelandhaydn.org/education/hhyc)  
or call 617.262.1815*

# HANDEL AND HAYDN SOCIETY CHORUS

*Funded in perpetuity by Jane and Wat Tyler*

## **Soprano**

Jessica Cooper  
Carley DeFranco  
Cassandra Extavour  
Maggie Finnegan  
Elise Groves  
Janet Ross  
Sonja Dutoit Tengblad  
Logan Trotter

## **Alto**

Cody Bowers  
Catherine Hedberg  
Margaret Lias  
Caroline Olsen

## **Tenor**

Jonas Budris  
Marcio de Oliveira  
Eric Christopher Perry  
Patrick T. Waters

## **Bass**

Ryne Cherry  
Bradford Gleim  
Scott Allen Jarrett  
David McFerrin

Chorus Prepared by  
Raphaël Pichon

*The Cabot Fund for Chorus Leadership is endowed  
in perpetuity in Memory of Ned Cabot*



 **JUVENTAS**  
NEW MUSIC ENSEMBLE  
OLIVER CAPLAN | ARTISTIC DIRECTOR

**RYAN SHANNON:  
CENTER STAGE**

**JANUARY 29, 2022 at 8:00 PM EST**

**ONLINE + LIVE AT  
MULTICULTURAL ARTS CENTER**  
41 SECOND STREET, EAST CAMBRIDGE, MA

**JUVENTASMUSIC.ORG**



# Together again

JOIN US FOR CONCERTS IN-PERSON AND ONLINE

## Boston Early Music Festival

Paul O'Dette & Stephen Stubbs, Artistic Directors

### BEMF CHAMBER OPERA SERIES

Telemann's *Pimpinone* ~and~ *Ino*

**SAT, 12/11, 8PM**

Online Premiere

### THE TALLIS SCHOLARS

**FRI, 12/10, 8PM**

St. Paul Church, Cambridge

**FRI, 12/17, 8PM**

Online Premiere

LEARN MORE AT [BEMF.ORG](http://BEMF.ORG)!

# BLUEHERON

23RD  
SEASON

SCOTT METCALFE, ARTISTIC DIRECTOR

**2021-2022 CONCERTS IN CAMBRIDGE & ONLINE**

**OCTOBER 15-16 — OCKEGHEM@600**

*Missa Quinti toni*

**DECEMBER 17-18 — CHRISTMAS IN BAROQUE GERMANY**

with Dark Horse Consort

**FEBRUARY 12 — UN PETRARCHINO CANTATO**

**MARCH 18-19 — OCKEGHEM@600**

*Missa Sine nomine a 5*

**APRIL 22-23 — MANY VOICES**

Obrecht, Daniel-Lesur, Sanlikol

[www.blueheron.org](http://www.blueheron.org)

# HANDEL AND HAYDN SOCIETY

## GOVERNANCE

### Board of Governors

Robert N. Shapiro

*Chair*

Deborah First

*Vice Chair*

Carl Kester

*Vice Chair*

Karen Levy

*Vice Chair*

Michael Scott Morton

*Vice Chair*

Judith Verhave

*Vice Chair*

Kathleen Weld

*Vice Chair*

David Weaver

*Treasurer*

Elizabeth Reza

*Secretary*

David Snead

*President and CEO*

Dr. Frank Clark

David Elsbree

Philip V. Gerdine

Dr. Frank G. Haluska

James S. Hoyte

Janina Longtine

Joseph Mari

Anthony T. Moosey

Dr. Stephen Morrissey

Michael Oliveri

Jonathan Painter

Carolyn Pope

Catherine Powell

Brenda Gray Reny

Arthur G. Robins

George Sacerdote

Emily F. Schabacker

Susan M. Stemper

Jeffrey S. Thomas

Nancy B. Tooke

Thomas J. Watt

Elizabeth P. Wax

Jean Woodward

Christopher R. Yens

### Governors Emeriti

Todd Estabrook

Joseph M. Flynn

Mary Nada

Timothy C. Robinson

Janet P. Whitla

---

### Board of Advisors

Carolyn Aliski

Martha Hatch Bancroft

Giulio Batterman

Julian G. Bullitt

Jane Carlson

John Cornish

Julia Cox

Nicholas Dials

Thomas B. Draper

Kate S. Flather

Christina Frangos

Melissa D. Gerrity

Nicholas Gleysteen

Pamela Goldberg

Nancy Hammer

Carrie L.T. Hammond

Suzanne Hamner

Frederick Ilchman

Paul V. Kelly

Mark A. King

Winifred I. Li

Laura Lucke

Peter G. Manson

James F. Millea

Nancy Nizel

Dr. Winifred B. Parker

Benjamin Perkins

Prema P. Popat

Robert H. Scott

Richard F. Seamans

Barbara Stedman

Dr. Terry G. Taylor

Cecily W. Tyler

Susan B. Weatherbie

Jane Wilson

John Winkleman

Lists current as of November 2, 2021

# ENDOWED CHAIRS + NAMED FUNDS

The Handel and Haydn Society is grateful to the generous donors who have endowed chairs and established named funds to support H+H's educational and artistic programs. If you are interested in a naming opportunity, establishing a fund, or contributing to an existing fund, contact Mike Peluse, Vice President of Development, at 617.262.1815 or [mpeluse@handelandhaydn.org](mailto:mpeluse@handelandhaydn.org).

## **Artistic Director**

*The Bicentennial Chair*

*Funded by an Anonymous Donor*

## **H+H Chorus**

*Funded in Perpetuity by*

*Jane & Wat Tyler*

## **Chorus Leadership**

*Cabot Fund for Chorus Leadership in*

*Memory of Ned Cabot*

*(in perpetuity)*

## **Concertmaster**

*Chair Endowed in Perpetuity*

*by Rhoda & Paul Joss*

## **Principal Second Violin**

*Dr. Lee Bradley III Chair*

## **Principal Viola**

*Chair Funded in Memory of*

*Estah & Robert Yens*

## **Principal Cello**

*Nancy & Richard Lubin Chair*

## **Principal Bass**

*Amelia Peabody Chair*

## **Principal Oboe**

*Chair Funded in Part by Dr. Michael*

*Fisher Sandler*

## **Principal Horn**

*Grace & John Neises Chair*

## **Organ**

*Chair Funded in Perpetuity in*

*Memory of Mary Scott Morton*

## **Timpani**

*Barbara Lee Chair*

*in Memory of John Grimes*

## **Education Program**

*Funded in Perpetuity by*

*Karen S. & George D. Levy*

## **Chorus of Tenors and Basses**

*Funded in Perpetuity by*

*Lucas Wegmann*

## **Named Funds**

*Amy Anthony Fund for*

*Community Engagement*

*Marie-Hélène Bernard*

*Endowed Fund for Excellence*

*Miguel Canizares Fund for*

*Music Education*

*George Geyer Fund*

*John Grimes Fund*

*Ann and Graham Gund Endowment*

*Fund*

*Christopher Hogwood Historically*

*Informed Performance Fellowship*

*Remsen M. and Joan G. Kinne*

*Endowed Fund for*

*Music Education*

*Robert N. Shapiro*

*Endowment Fund*

*Wat H. Tyler Jr. Memorial Fund*

*Ronald Woodward*

*Education Fund*

## **Scholarships**

*Candace MacMillen*

*Achtmeyer Award*

*Evangelyna Etienne*

*Scholarship Award*

*Barbara E. Maze Award for*

*Musical Excellence*

*Susan Rodgers Youth Chorus*

*Scholarship*



# LIFETIME BENEFACTORS

The following donors have made cumulative gifts to H+H totaling \$100,000 or more as of October 21, 2021 (only received gifts are counted).

## \$1 Million+ Level

Amy S. Anthony\*  
Barr Foundation  
Alfred & Fay Chandler\*  
Rhoda K. Joss & Paul C. Joss  
George D.\* & Karen S. Levy  
Michael & Marcy Scott  
Morton  
Jane & Wat\* Tyler  
*Two Anonymous Donors*

## \$500,000 Level

Allison & William Achtmeyer  
Willma H. Davis\*  
Deborah & Robert First  
Joseph M. Flynn  
Mr.\* & Mrs. Remsen M.  
Kinne III  
The Klarman Family  
Foundation  
Massachusetts  
Cultural Council  
Robert H. Scott &  
Diane T. Spencer  
Susan Stemper &  
Peter Lieberwirth  
*Two Anonymous Donors*

## \$250,000 Level

Bloomberg Philanthropies  
The Boston Foundation  
Cabot Family  
Charitable Trust  
Edmund\* & Betsy Cabot  
John F. Cogan &  
Mary L. Cornille  
David Elsbree &  
Lorraine Gilmore  
Todd Estabrook  
George Frederick Jewett  
Foundation East  
Philip Gerdine *in memory of*  
*Marjorie Gerdine*  
Mr. & Mrs. John W. Gerstmayr  
Stephanie Gertz  
Mr. & Mrs. Nicholas Gleysteen  
Mr.\* & Mrs. J. Robert Held  
Jane's Trust  
Winifred I. Li &  
William P. Oliver  
Dr. Janina Longtine  
Jane E. Manilych &  
Prof. W. Carl Kester  
Stephen Morrissey  
Mary & Sherif Nada  
National Endowment  
for the Arts  
Parthenon-EY

Timothy and Maren Robinson  
The William B. and Bertha E.  
Schrafft Charitable Trust  
Seth Sprague Educational &  
Charitable Foundation  
Robert N. Shapiro  
Jim & Cathy Stone  
Jeffrey S. & Ann M. Thomas  
Nancy & Michael Tooke  
U.S. Small Business  
Administration  
Judy & Menno Verhave  
Virginia Wellington  
Cabot Foundation  
Janet & Dean\* Whitla  
Wilson Family Foundation  
Ron\* & Jean Woodward  
Christopher R. Yens &  
Temple Gill  
*One Anonymous Donor*

## \$100,000 Level

Abbot & Dorothy H. Stevens  
Foundation  
Carolyn & William Aliski  
Amelia Peabody  
Charitable Fund  
Ann & Gordon Getty  
Foundation  
Leo\* & Gabriella Beranek  
Bessie Pappas  
Charitable Foundation  
Boston Private  
Dr. Lee C. Bradley III\*  
Rob & Nancy Bradley  
Julian & Marion\* Bullitt  
Miguel\* & Sheila Canizares  
Louise & Thomas Cashman  
Clark Charitable Trust  
Patricia Collins\*  
Gregory & Anne Crisci  
David Greenewalt  
Charitable Trust  
Elisabeth K. Davis\*  
Deborah Munroe Noonan  
Memorial Fund, Bank of  
America, N.A., Trustee  
The E. Nakamichi Foundation  
Howard\* & Darcy Fuguet  
Anne & David Gergen  
John W. Gorman\*  
Graham & Ann Gund  
Janet\* & Henry Halvorson  
Sylvia & Roy A.\* Hammer  
Dena & Felda Hardyman  
Ellen & John Harris  
The Harold Whitworth Pierce  
Charitable Trust  
Helena Foundation  
Mr.\* & Mrs. David B. Jenkins  
John Hancock  
Financial Services  
Judith & Mark King  
Kingsbury Road  
Charitable Foundation  
David Landay  
League of American  
Orchestras  
Linde Family Foundation  
Nancy & Richard Lubin  
Laura M. & Thomas R. Lucke  
Peter G. Manson &  
Peter A. Durfee  
Matthew A. and Susan B.  
Weatherbie Foundation  
Walter H. Mayo\*  
Kathleen McGirr &  
Keith Carlson  
James F. Millea &  
Mary Ellen Bresciani  
Miss Wallace M. Leonard  
Foundation  
Anthony & Amy Mooney  
Betty Morningstar &  
Jeanette Kruger  
Grace & John Neises\*  
Janet Newell\*  
Scott\* & Diane Palmer  
The Parker Family  
Foundation  
Winifred & Leroy Parker  
Dana & Carolyn Pope  
Mr. & Mrs. J. Daniel Powell  
Mr.\* & Mrs. Jerome Preston Jr.  
Judith Lewis Rameior\*  
John & Janis Raguin  
Alice E. Richmond &  
David Rosenbloom  
Michael F. Sandler  
Stanley & Kay Schlozman  
Scully Family Foundation  
Mr. & Mrs. Stephen A.  
Shaughnessy  
State Street Foundation  
Stearns Charitable Trust  
Stratford Foundation  
Jolinda & William Taylor  
Rose-Marie &  
Eijk van Otterloo  
Donald F. Wahl\*  
Thomas & Jane Watt  
Lucas Wegmann  
John J. Winkleman Jr.  
Rawson\* & Marcia Wood  
*Seven Anonymous Donors*

\* Deceased



# Your forte is making a difference. Our musicians are so grateful.

Too often, the arts are underfunded and underestimated as a luxury. **At H+H, we know music is a necessity of the spirit.**

The musicians at H+H have dedicated their lives and livelihoods to sharing stirring melodies that inspire, heal, and energize hearts like yours.

Not only that, the students and teaching artists at H+H have dedicated their studies and budding passion to safeguard the future of this timeless and expressive artform.

**Embrace a role in making the music you love come to life.** Join a community of music lovers making a continuous impact on stage, on screen, and in the classroom.

**Your thoughtful gift** to H+H's Annual Fund ensures that the music you love plays on.

*"You really are family, and that is so unique in our world. Thank you, thank you, thank you for all you tirelessly do."*

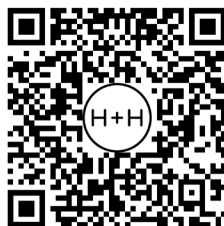
— Sonja DuToit Tengblad, H+H Chorus

## SUPPORT H+H FROM YOUR SEAT

Help us make music and make a difference by making your gift from the comfort of your seat!

Donate right now through one of these quick and easy methods:

- Text "HHGIVE" to 243725
- Scan this QR code
- Go online directly at [handelandhaydn.org/make-a-gift](http://handelandhaydn.org/make-a-gift)



Any questions? Please contact Associate Director of Annual Giving Gabrielle Jaques at 617.262.1815 or [gjaques@handelandhaydn.org](mailto:gjaques@handelandhaydn.org).

**THANK YOU FOR MAKING H+H YOUR MUSICAL HOME**

# INDIVIDUAL DONORS

H+H is grateful for the generous support of the following individuals who made gifts of \$250 or more to the Annual Fund as of October 1, 2021. This list includes gifts for all purposes in the 2021-22 Season and also reflects the value of donated subscriptions and concert tickets.

## Composers' Circle

### Handel and Haydn Circle (\$100,000 and above)

Willma H. Davis\*  
Rose-Marie & Eijk van Otterloo  
Scully Family Foundation  
*Two Anonymous Donors*

### Mozart Circle (\$50,000-\$99,999)

Julia D. Cox  
Philip Gerdine *in memory of*  
*Marjorie Gerdine*  
Graham & Ann Gund  
Barbara & Amos Hostetter  
Karen Secunda Levy  
Drs. Janina A. Longtine &  
Christopher D. Fletcher  
The Parker Family  
Foundation  
John & Janis Raguin  
Emily F. Schabacker  
Robert N. Shapiro  
Jim & Cathy Stone  
Jeffrey & Ann M. Thomas  
Judith & Menno Verhave  
Kathleen & Walter Weld  
*One Anonymous Donor*

### Bach Circle

(\$25,000-\$49,999)  
Carolyn & William Aliski  
Dr. Frank O. Clark &  
Dr. Lynn DeLisi  
Deborah & Robert First  
Joseph M. Flynn  
Anne & David Gergen  
Dana & Carolyn Pope  
Elizabeth Reza & Paul Skelly  
Michael & Marcy Scott  
Morton  
Nancy & Michael Tookey  
Christopher R. Yens &  
Temple Gill  
*One Anonymous Donor*

## Conductor's Circle

### Platinum Baton (\$15,000-\$24,999)

Alpine & Donald Bird  
Kate S. Flather  
Heather & Robert Keane  
Family Foundation  
Peter G. Manson &  
Peter A. Durfee  
Anthony & Amy Moosey  
Stephen Morrissey  
Jonathan & Robin Painter  
Chris & Astrid Peisch  
Mr. & Mrs. J. Daniel Powell  
Art & Elaine Robins

Stanley & Kay Schlozman  
Susan M. Stemper &  
Peter Lieberwirth  
Elizabeth & Robert Wax  
John J. Winkleman Jr.  
Jean Woodward  
*One Anonymous Donor*

### Gold Baton (\$10,000-\$14,999)

Christopher Baldwin &  
Sally Reyerling  
Rob & Nancy Bradley  
Julian Bullitt  
Miguel\* & Sheila Canizares  
Jane & Christopher Carlson  
Louise & Thomas Cashman  
David B. Elsbree &  
Lorraine Gilmore  
Nicholas & Paula Gleysteen  
Lia Gore & Frank Haluska  
Ellen & John Harris  
Kathryn Hintz  
Nancy & Richard Lubin  
Jane E. Manilych &  
Prof. W. Carl Kester  
Joseph Mari  
Kathleen L. McGirr &  
Keith F. Carlson  
James F. Millea &  
Mary Ellen Bresciani  
Timothy & Deborah Moore  
Betty Morningstar &  
Jeanette Kruger  
Brenda Gray Reny  
Richard & Eleanor Seamans  
Wayne & Kathryn Smith  
David C. Snead &  
Kate Prescott  
Thomas & Jane Watt  
David Weaver  
Jane & James Wilson  
*Three Anonymous Donors*

### Silver Baton (\$5,000-\$9,999)

Sam Anthony &  
Andrea C. Deeker  
Martha Hatch Bancroft  
Giulio Batterman  
Mary L. Cornille &  
John F. Cogan Jr\*  
John Cornish & Victoria  
Angelatova-Cornish  
Terry Decima  
Rohit Deshpande &  
Anita Watumull  
Nicholas Dials &  
Dustin Henderson  
Tom & Ellen Draper  
James & Melissa Gerrity  
Pamela Winer Goldberg  
Nancy & Bill Hammer  
Jonathan & Carrie Hammond

Jamie Hoyte & Norma Dinnall  
George & Elisabeth Ireland  
Rhoda K. Joss & Paul C. Joss  
Paul V. Kelly & Linda Perrotto  
Judith & Mark King  
Joan G. Kinne  
Katherine A. Kirby  
Winifred I. Li *in memory of*  
*William P. Oliver*  
Laura M. & Thomas R. Lucke  
Randi & Tom Mitchell  
Mary & Sherif Nada  
Nancy Nizel *in memory of*  
*George Levy*  
Michael J. Oliveri &  
Eric A. Aho  
Winifred & Leroy Parker  
Karen M. & James F. Poage  
John A. Renner Jr.  
Robin Riggs & David Fish  
Victoria Santarcangelo &  
John Dobermiller  
Rebecca A. Silliman M.D.  
Stanley & Jody Smith  
Barbara Stedman *in memory of*  
*Michael Stedman*  
Terry & Michael Taylor  
Jolinda & William Taylor  
David G. Tuerck &  
Prema P. Popat  
Cecily W. Tyler  
Jane A. Tyler  
Janet & Dean\* Whitla  
*Three Anonymous Donors*

### Bronze Baton (\$2,500-\$4,999)

Richard & Carla Benka  
Biogen Idec.  
Edward S. W. Boesel  
Rhys Bowen &  
Rebecca Snow  
John Paul & Diane Britton  
Mark C. Brockmeier &  
Kathleen Silva  
Polly Brown  
Ronald & Elizabeth Campbell  
Melissa Chase & K. E. Duffin  
Paul & Wendy Chieffo  
John & Katharine Cipolla  
Neal Crossland  
Bob & Audree Dyson  
Edmund & Betsy Cabot  
Charitable Foundation  
Todd Estabrook  
Irving & Gloria Fox  
Clark & Wendy Grew  
Deborah & Martin Hale  
Suzanne & Easley Hamner  
Frederick & Cassandra  
Ilchman  
Per & Jan Jonas  
Sidney & Geoffrey Kenyon  
Maryanne King

Neil M. Kulick &  
 Jane C. Harper  
 John & Elizabeth Loder  
 Robert E. Lyons  
 David & MaryBeth MacBain  
 Ruth & Victor McElheny  
 Jack Morgan &  
 Anne Zebrowski  
 Robert & Jane Morse  
 Rory O'Connor &  
 Claire Muhm  
 Scott\* & Diane Palmer  
 Rev Benjamin D. Perkins &  
 David W. Brown  
 Randall Charitable Gift Fund  
 Joyce Raymond  
 Frederick Reis  
 Timothy & Maren Robinson  
 Paul & Ann Sagan  
 Barbara & Edward Scolnick  
 Joan K. Shafran &  
 Rob Haimes  
 Tom & Martha Sieniewicz  
 Michael Simons &  
 Margaret Sagan  
 Arnold & Polly Slavet  
 Drs. Robert G. Spiro\* &  
 Mary J. Spiro  
 David & Sharon Steadman  
 Stewart H. Steffey Jr.  
 John & Donna Sytek  
 Ned & Frank Tate  
 Lisa Teot  
 W. M. Thackston  
 Margaret E. Thomas  
 Rik & Elise Tuve *in memory of*  
*Ron Woodward*  
 Rosamond B. Vaule  
 Heidi Vernon  
 Phyllis Vineyard  
 Lucas Wegmann  
*Anonymous in memory of*  
*Amy Anthony*  
*Three Anonymous Donors*

## Musician's Circle

### Soloists' Circle

**(\$1,000-\$2,499)**

Samuel & Edith Abbott  
 Joseph Abuciewicz  
 William & Zachary Agush  
 William & Julia Alexander  
*in memory of F. Knight*  
*Alexander*  
 Robert & Kathleen Allen  
 Salvatore Angelone  
*in memory of John Whiteside*  
 Dr. Ronald Arky  
 Constance F. Armstrong  
 Suzanne & Robert Art  
 Elizabeth & Edmund Bacon  
 John & Elizabeth Bacon  
 C. Hunter Baker  
 Curtis L. Barnes  
 John & Helen Barnes  
 Susan & Arthur Barsky  
 Mary Ellen Bates  
 Thomas & Holly Bazarnick  
 Thomas G. Beauchamp-Arnold  
 Jeremy Behrle & Beth Gage  
 Elaine Beilin &  
 Robert H. Brown Jr  
 Dorothy Beke  
 Katharine C. Boden

Jennifer Borden &  
 Joseph Balsama  
 Oliver Bouchier &  
 Jeanette Daria Reagan  
 Donna Bouvier and  
 Helen Betz  
 Robert Brack & Janet Bailey  
 Timothy P. Bragan  
 Marilyn Brandt  
 Dr. & Mrs. Rick Bringhurst  
 Reverend Thomas W. Buckley  
 Lawrence & Phyllis Buell  
 Linda Bui & Theodore Sims  
 Susan Okie Bush  
 Katie & Paul Buttenwieser  
 Frederick Byron  
 Sarah M. Carothers &  
 Duncan G. Todd  
 Richard & Mary Jane Cheever  
 Dennis Churchman &  
 James Evans  
 John Clark &  
 Judith Stoughton  
 Mimi Collins  
 Chathan Cooke  
 Linzee Coolidge  
 William & Sally Coughlin  
 John & Maria Cox  
 Robert & Joy Creamer  
 Sen. Cynthia Creem &  
 Harvey Creem  
 Robert & Amanda Crone  
 Neal Crossland  
 John & Diddy Cullinane  
 Arthur R. Curtis  
 Elizabeth C. Davis  
 Jeffrey Del Papa &  
 Susan Assmann  
 Jackie Dennis  
 Lilee Dethchan  
 C. Forbes & Carolyn Dewey  
 Heidi Dix & Roger M. McPeck  
 Lucinda I. Doran  
 Kari & Thomas Doucette  
 Eric Drogin & LaurieAnn  
 Yeisley-Drogin  
 Kathleen & Thomas Dunphy  
 Simon & Carolyn Eccles  
 Diana Eck  
 Mark & Cindy Edwards  
 Jeffrey & Anne Elton  
 Ken & Alice Erickson  
 Kellye Eversole &  
 Catherine Feuillet  
 Joel & Janet Farrell  
 Peter & Sarah Farrow  
 Jerry Fielder & Daniel G.  
 Campbell-Benson  
 Peter F.  
 Pierre Fleurant  
 John & Patricia Folcarelli  
 Gary Freeman  
 Kenneth Froewiss  
 Howard\* & Darcy Fuguet  
 Sarah & Andy Gallop  
 Jeffrey Giles  
 Paul & Dana Gillin  
 David Glen  
 Mary Ellen Goffredo  
 Charlene Placido &  
 Peter Goldis  
 Alice Goldsmith  
 Robert L. Goldsmith &  
 Kathleen McIlsac  
 Goodman Family Fund of the  
 New Hampshire Charitable  
 Foundation

Elizabeth & Paul Goodrich  
 Robert & Judy Gore  
 Kenneth & Sue Gould  
 Pamela Kohlberg &  
 A. Curt Greer  
 Carol Griffin  
 Sharon Grimberg  
 Ellen & Tim Guiney  
 Esther Hanig  
 James & Monina Harper  
 Jill Harper  
 Jill B. Hartman  
 Jasjit & Donald Heckathorn  
 John Herbert &  
 Sarah Woolverton  
 Georgene & Dudley  
 Herschbach  
 Ann Higgins  
 Alan & Norma Hobbs  
 Warren & Marilyn Hollinshead  
 Karen Holmes  
 Dr. Douglas Horst &  
 Ms. Maureen Phillips  
 Peter & Jane Howard  
 Judith S. Howe *in honor of*  
*Mrs. Ronald Woodward*  
 Jane & Gordon Hugenberger  
 Eileen Hulnick  
 Joseph Hunt  
 William & Lauren Huyett  
 Christopher & Dorothy Hyde  
 Ilene & Richard Jacobs  
 Penny Janeway  
 Judith Katz  
 Stephen B. Kay &  
 Lisbeth Tarlow  
 Daniel & Gloria Kearney  
 Ninelle & Gutman Keyser  
 Peter & Claudia Kinder  
 Barry Kernfeld &  
 Sally McMurry  
 David H. Knight  
 Denis Kokernak  
 David Kozak  
 Dr. David Kwiatkowski &  
 Mrs. Ellen Richstone  
 Sylvia Lanza  
 Claire Laporte  
 David & Suzanne Larsen  
 Jackie Lenth  
 Pamela Liu &  
 Robert Bourgeois  
 Jonathan Loring  
 Loyda House Jesuit  
 Community  
 Beth & Michael Luey  
 David & MaryBeth MacBain  
 Allison MacCormick  
 Hugh MacKay &  
 Elizabeth MacKay-Gray  
 Patricia & Richard MacKinnon  
 Patricia MacLeod &  
 Russ Vickers  
 Oscar F. Malcolm  
 Laura & Scott Malkin  
 Margaret H. Marshall  
 William & Kristin Martin  
 Reverend Mark Massa, S.J  
 George W. McCormick  
 Krista McKee  
 George & Mary McNeil  
 Megan Meirav  
 Amy Meyer  
 Tremont & Susan Miao  
 Klaus Miczek  
 Michael & Anne Miller  
 Sharon A. Miller

Therese Minton  
 Judith Mir  
 Edward Morey  
 Nina & Marshall Moriarty  
 Betty Morningstar &  
   Jeanette Kruger  
 John & Susan Morris  
 Wesley & Sandra Mott  
 Charles Muller III  
 Myra Musicant &  
   Howard Cohen  
 John & Evelyn Neumeyer  
 Margaret & Joseph  
   Newhouse  
 Dan Nguyen  
 Michael & Chen Nir  
 Marie B. Normoyle  
 Thomas O'Connell  
 Ellen & John O'Connor  
 Kathleen M. O'Donnell  
 Joan Parrish  
 Kathleen & Bill Pasko  
 Connie Pawelczak  
 Michael Payne &  
   Jean Carroon  
 Deborah & Charles Peluse  
 Mike Peluse &  
   Hannah Weisman  
 Fatima Penrose  
 Petersen Family Fund  
 Eleanor Phillips  
 Pilch-Craren Family  
 Plimpton-Shattuck Fund  
 Florence L. Preisler  
 Frank & Astrida Ramrath  
 John R. Regier  
 Linda Rhodes *in memory of*  
   *my mother, Josie*  
 Dr. & Mrs. William A. Ribich  
 Nancy & Peter Rice  
 Virginia Richard  
 Catherine Riley &  
   Barbara Werner  
 Susan Rioff *in memory of*  
   *Amy Anthony*  
 Maria Rosario  
 Deborah & David Rosmarin  
 Catherine Rude  
 David & Kathleen Rushford  
   Murray Charitable Fund  
 Franklyn P. Salimbene  
 Kenneth & Shirley Sampson  
 Judson & Aliza Samuels  
 P Miyoko Sato  
 John & Anne Schiraga  
 Robert & Catherine Schneider  
 Warren M. Schur  
 Dr. & Mrs. Gunther Schmitt  
 Bonnie & Neil Schutzman  
 Robert H. Scott &  
   Diane T. Spencer  
 Peter & Kathleen Shank  
 Karen Shapiro  
 Marilyn Shesko  
 David Selkovits  
 Dr. Alan E. Smith &  
   Ms. Leigh Dunworth  
 Richard & Barbara Smith  
 John & Jean Southard  
 William & Diane Squires  
 Albert Staebler  
 Richard Boardman &  
   Lynne Stanton  
 Dr. & Mrs. J. K. Stark  
 Mr. & Mrs. Ray Stata  
 Michael Steadman  
 Eva Kalawski & John Sutton

Ralph Sweetland  
 John & Donna Sytek  
 Ryan Taliaferro  
 Catherine B. Taylor  
 David Taylor  
 Nathalie & John Thompson  
 Olaf & Margaret Thorp  
 Janice Tilson  
 Anne R. Umphrey  
 Kristen Vagliardo  
 Elizabeth A. & Kimberley R.  
   Van Atten  
 Robert C. Volante  
 Arlene Weintraub  
 Ilana White  
 Genevieve Pluhowski &  
   Russ Wiggin  
 Kenneth L. Williams &  
   Christine Dutkiewicz  
 Sydney & Jonathan Winthrop  
 Katie & Marshall Wolf  
 Amy Woodward &  
   Leonard Varon  
 Clifford Wunderlich &  
   David Shuckra  
 Ioannis V. Yannas  
 David & Evelyn Yoder  
 The Honorable Rya W. Zobel  
 Mr. Peter Zschokke  
*Anonymous in memory of my*  
   *husband, Bud Page*  
*10 Anonymous Donors*

# **Chorus Circle (\$500-\$999)**

J Adams & P Comeau  
 Joseph Aieta & Helen Alcala  
 John & Julia Alberta  
 John Alcock  
 Joseph Alen  
 David Ames  
 Sarah & John Ames  
 Joshua Anderson  
 Steven Angelides  
 Salvatore Angelone  
   *in memory of John Whiteside*  
 Gerald Angoff  
 James Annis  
 John Appleton  
 Catalina Arboleda  
 Richard B. & Carmen Arnold  
 Sarah Ashby  
 Brenda Baker & Eric Grosse  
   Donor Fund  
 Michael & Theresa Barry  
 Michael J. Baum &  
   Catherine E. Snow  
 John & Molly Beard  
 Kimberley Beaudet  
 Nancy & Reiner Beeuwkes  
 Richard Belkner  
 Joanne L. Beswick  
 Wendy Bellew  
 Rev. Kazimierz Bem  
 David & Nancy Berkowitz  
 Kathleen M. Berman  
 Andrea Bertram  
 Madeleine Biondoliillo  
   *in memory of Michael Hubner*  
 Judith & Robert Birch  
 John Mayer & Richard Black  
 Richard & Mary Kate Bluestein  
 Bruce & Jane Blumberg  
 Katharine C. Boden  
 Jeffrey Bodmer-Turner  
 Edward S. W. Boesel  
 Chantal Boiardi

Barbara E. Bond  
 Timothy P. Bragan  
 Mr. & Mrs. David I. Brainard  
 Daniel S. Brazel *in memory of*  
   *Janyce M. Brazel*  
 Carolyn Breen  
 Margaret & Nicholas Brill  
 Loring Brinckerhoff  
 Dr. & Mrs. R. E. Britter  
 Mark C. Brockmeier &  
   Kathleen Silva  
 Jennifer A. Brown &  
   Susan E. Goranson  
 Richard & Irene Brown  
 Paul & Patricia Buddenhagen  
 Margaret Burke &  
   Dennis Fiori  
 Kennett & Barbara Burnes  
 James & Susan Bush  
 Alisa Braithwaite &  
   James Buzard  
 Nestor & Cynthia Camino  
 John & Helen Carr  
 Mary & Eugene Cassis  
 Sarah Castricum  
 Ruth Chang  
 Deborah Choate  
 H. Christian & Norma Floyd  
 Amanda Clark MacMullan  
 John Clippinger  
 Rev. Francis J. Cloherty  
 Christine Coakley &  
   Michelle O'Connell  
 Allan & Kathleen Cohen  
 Bruce Cohen  
 Jeff & Jennifer Collins  
 James Connell  
 Ms. Sally Cook  
 Mr. & Mrs. Robert V Costello  
 Eugene L. Cox  
 Donald V. Crabtree  
 Mary Louise & Christopher  
   Crofton-Atkins  
 Alfred W. Crompton  
 Tim & Pam Cronin  
 Susan & Stephen Crump  
 Molly & Philip Cutler  
 Richard C. Dabrowski &  
   Carolyn A. Smith  
 Andrea & Herbert Daroff  
 Mary H. DeGarmo  
 Willem & Paula DeJong  
 Pablo DeTorres  
 David & Mary Ellen Dinwoodey  
 Peter H. Dodson &  
   Beverly Feinberg  
 John Donahue  
 Richard G. Dower Jr.  
 Scott & Marissa Doyle  
 Donald & Gale Druga  
 Linda Drury & Paul McBride  
 Charles Duncan  
 Terry Eastman *in memory of*  
   *Tom Eastman*  
 David A. Eckert  
 Kay Edwards  
 Sheila Ekman  
 Mary K. Eliot  
 Weatherly R. Emans  
 Kathleen Emrich  
 Janet Engelman  
 George & Carol Epple  
 Robert Evans  
 Suzanne Ezrre &  
   Daphne Haas-Kogan  
 Joseph J. Ferreira Jr &  
   Dr. Manabu Takasawa



John Flanagan  
 Alden Flanders  
 James Flynn  
 Scott Forbes & Regina Ventre  
 Fox Hill Village  
 Carole & Bruce Foxman  
 James Franklin &  
   Brenda Swithenbank  
 Mark Franklin & Diane Garner  
 Edward Gadsby &  
   Nancy Brown  
 Buzz & Connie Gagnebin  
   *in memory of Charles*  
 Vicky & Dennis Gallagher  
 Christine Garrity  
 R. H. Garrett-Goodyear  
 Peter & Deborah Gates  
 Erica Gelser  
 Colonel & Mrs. Ralph Gerenz  
 Annie Thompson &  
   Tim Gerhold  
 Peter M. Ghiloni  
 Reginald & Lenore Gibson  
 Ruth & Michael Gilbert-  
   Whitner  
 Thomas Gillespie  
 Mary & Michael Gimbrone  
 Michal A. Golay  
 Richard Good  
 Laura & Carl Goodman  
 Robert Gould  
 Samuel & Florence Graves  
 Mr. & Mrs. Roland Gray III  
 Matthew Gregorio  
 Claire & Richard Greene  
 Dr. & Mrs. Scott H. Greenstein  
 Ms. Jeanne T. Griffith  
 Stanley N. Griffith &  
   Ann E. Schauffler  
 Martin Guay  
 Victoria Gurfolino  
 Linda Gurvitz  
 Linda Guttman  
 Carol Haber &  
   Richard Englund  
 Kimberley Haines  
 Susan Hajjar  
 Mrs. Sylvia Hammer  
 Theodore & Anne Hammett  
 James S. Harper  
 Timothy Harwood  
 Lisa Hastings & Thomas Akin  
 George\* & Daphne  
   Hatsopoulos  
 Robert Haynor &  
   Ralph Colangelo  
 Dorothy Heath  
 Bernhard & Susan Heersink  
 Ruth Hennig  
 Martin & Ellen Herbordt  
 Kathryn Herold  
 Patricia A. Herrin *in honor of*  
   *John Herrin*  
 James T. Higgins & Cynthia  
   N. McCann  
 Ingrid & Michael Hillinger  
 Jennifer Hochschild &  
   Charles Broh  
 Frederic G. Hoppin  
 Thomas Hotaling  
 Beth F. Houston  
 Ellen Hume  
 George & Sytske Humphrey  
 Ann & John Iacobucci  
 Del & Reggie Irving  
 Ilene & Richard Jacobs  
 Kathleen & Hershel Jick

Frank Smizik & Julia Johnson  
 Suzanne Kahl  
 Mary & Robert Kahn  
 Beverly & Timothy Kaiser  
 William Kasimer  
 Mary A. Kane  
 Karen R. Kay  
 James Kaye & Kim D. Rubin  
 Elizabeth Keating  
 Brian & Sara Kelley  
 Lorette Kelley  
 Kevin Kelly  
 Heather & Robert Kirby  
 Carol & Arnold Klukas  
 Laurence & Barbara Koff  
 Mr. & Mrs. Michael Kraus  
 Jordan Kreidberg  
 William LaBelle  
 Nan Laird & Joel Alstein  
 David Lakari  
 Robert & Mary Richardson  
 Mary J. Larson  
 Thomas P. Lavin  
 Bill & Kathleen Leahy  
 Donald Leka  
 Madeline K. Leone  
 Kenneth Levin  
 Sara Lewis  
 Paul & Brooke Lipsitt  
 Andrea & Jason Loeb  
 Paul & Brooke Lipsitt  
 Bruce G. Lundie  
 Betty S. Lykins  
 Robert T. Macauley  
 Robert & Camille MacKusick  
 Laura Maddox  
 Michael Maler  
 Cynthia Maloney  
 Kathryn Mange  
 Pamela Marron  
 Diana Marsh  
 Dr. & Mrs. Edward J. Martens  
 Lawrence A. Martin Jr.  
 Dr. Owen R. Mathieu Jr. &  
   Eileen Mathieu  
 Barbara Ann & Michael  
   McCahill  
 Stuart McCalley  
 Audrey McCarthy &  
   John Hoye  
 Stephen J. McCarthy  
 Roy & Shelagh McCauley  
 Martin C. Mihm Jr  
 Donald Miller  
 Stephen & Mary Lou Miller  
 Winona Moeller  
 Andrew Moore  
 Alexander & Donna Morgan  
 Ivor P. Morgan  
 Wesley & Sandra Mott  
 Martha Mugar  
 Marion Muskiewicz  
 Mary & Warren Naphtal  
 Thomas Narcavage &  
   Bonnie Neggers  
 Peter & Melissa Nassiff  
 Francis Neczytor  
 Selma Newburgh  
 Newbury Court  
 Burgess E. Nichols  
 Daniel Nigrosh  
 Marie B. Normoyle  
 H. Peter Norstrand &  
   Katherine Tallman  
 Malkah T. Notman  
 David & Janet Offensend *in*  
   *honor of Mark & Judith King*

Linda & Richard O'Keefe  
 Nancy Olson  
 Clara M. & John S. O'Shea  
 Beth A. Overmoyer &  
   Joseph P. Frolkis  
 Daniel Patnaude  
 Juan M. Pestana  
 Carolyn & Georges Peter  
 Christine Peterson  
 Brian D. Phenix & Susan J.  
   Sofia Phenix  
 Elizabeth & Ervin Philipps  
 Jeananne Piper Grady  
 David Posson  
 Gil Press & Liah Greenfeld  
 Martha Pott  
 Harold I. Pratt  
 Dmitry Pristin  
 Christopher & Esther Pullman  
 Patrick Dupre Quigley &  
   Robert Andrew Peccola  
 Michael Rabieh  
 Paul Rabin & Arlene Snyder  
 Roumen Radinov &  
   Youlia Radinova  
 Randall Charitable Gift Fund  
 Thomas Reid  
 John A. Renner Jr.  
 Tracy Reynolds  
 Kennedy & Susan Richardson  
 Philip Rightmire  
 Lawrence & Christa Roberts  
 Stewart Roberts  
 Mary E. Robinson  
 Jessie M. Rodrigue  
 Julie Romandetta  
 Darold Rorabacher  
 Sara L. Rubin &  
   David L. Montanari  
 Natalie Rusk  
 Gary J. Russell  
 Cheryl K. Ryder  
 Maureen A. Sabolinski  
 Helle Sachse  
 Holly P. Safford &  
   Charles Weilbrenner  
 Pito Salas  
 William Salomon &  
   Hannah Pressler  
 Lucas Sanders  
 Guy Sapirstein  
 Allen Schiller  
 Stephen & Toby Schlein  
 Daniel & Margaret Schneider  
   *in honor of of Joan Kinne*  
 Elizabeth & Russell Schutt  
 Laurie M Scott  
 Allan Shimer  
 Kathleen Skelly  
 Janet K. Skinner  
 Lynn & Peter Smiledge  
 Sybil & Don Smith  
 Ann Boling Solberg  
 Andrew Southcott  
 James Spall  
 Michael Spencer  
 Gary & Elizabeth Spiess  
 Robert & Carolyn Sprich  
 Robert Staron  
 Margaret Starr  
 Lorraine & Lee Steele  
 Robert J. Stein  
 Rabbi Jonah C. Steinberg  
 Janet Steins  
 Julianne & Michele Stenberg  
 Bryan Stevens  
 Campbell Steward

David Story  
 Alan J. Strauss  
 Margaret U. Suby *in honor of*  
*George D. Levy*  
 Patricia Ann Sullivan  
 Lawrence E. Susskind &  
 Leslie Tuttle  
 Steven Swanger  
 Elizabeth Tafe  
 Dr. & Mrs. John Tamilio III  
 Gareth Taube  
 Benjamin & Katherine Taylor  
 Sarah E. Thomas  
 Irwin & Cherie Thompson  
 Eric Thorgerson &  
 Elizabeth Foote  
 Susan C. Tillman  
 Norm & Judie Toti  
 Amy Veale  
 Paul Vermouth  
 Robert & Virginia Vidaver  
 Rosemary Walker  
 Lucy B. Wallace *in memory*  
*of James H. Wallace*  
 John & Beverly Wand  
 Warren R. & Eve C. Webster  
 Lucas Wegmann  
 Lewis Whitehead  
 Kathryn A. Willmore *in*  
*memory of Kathryn Adams*  
 Brian Wilson  
 Christopher & Jessica Wright  
 Gerlinde L. Wussler  
 Elizabeth Young  
 Jeanne W. Yozell  
 Miriam & David Zarchan  
 Melissa & Herbert Zeller  
 Charlan Zhou & Jeff Dike  
*Anonymous in memory of*  
*David Heartz*  
 16 Anonymous Donors

### **Orchestra Circle (\$250-\$499)**

S. James Adelstein  
 Sara & Jason Ader  
 Carol & George Airasian  
 Caroline Alpert  
 Judy Anderson & Tom Allen  
 Sarah & Christopher Andrysiak  
*in honor of Ian Watson*  
 Adam J. Apt  
 Neil Ayer  
 Lotte Bailyn  
 Richard Barbieri  
 The Barnolano Family  
 Aimee Basile  
 Douglas & Christie Baskett  
 Chantal Beauchemin  
 Marie Danielle Beaudry  
*in honor of Oscar &*  
*Laurence Beaudry*  
 Nicolette Bearel  
 Lawrence Bell  
 Helga & Milton Berglund  
 Judith Bergson  
 Sheila Berman  
 Lorrey & Kathleen Bianchi  
 Richard Bird  
 Mr. & Mrs. Marvin Biren  
 Heather & Tom Blake  
 Cynthia Bliss  
 Peggy S. Blitz  
 Martha Born  
 Josselyn Boudett  
 Suzanne Boulos  
 Nancy Bradford

Spyros & Anne Braoudakis  
 Barbara Braver  
 Mary-Lou Breitborde  
 Penelope Brindley  
 Jonathan Brusch  
 Leonard Buckle *in memory*  
*of my dear wife, Dr. Suzann*  
*Remington Thomas*  
 Kerry Buckley  
 Ferdinando Buonanno  
 Francisco J. Buot  
 Rebecca Cabral  
 Margaret R. Carvan  
 Laura Carrick  
 Bruce Chafee  
 Mary Chamberlain  
 Ellen & William Chapman  
 Mark Chester  
 Derek Clark & Monica Bruno  
 Donna Makin Coard  
*in memory of my husband*  
*Robert M. Coard*  
 Jennifer A. Cobe  
 Robert L. Cochran  
 Elizabeth A. Compton  
 Frederik & Sophia Crawford  
*in honor of Peter Manson &*  
*Peter Durfee*  
 Gregory & Anne Crisci  
 William & Joan Crosson  
 Mark E Cushing  
 John & Sally Davenport  
 Carmela & John D'Elia  
 Mia & Richard DeMeis  
 Dean K. Denniston Jr.  
 Father Constantine  
 Desrosiers  
 Edward & Dana Devereux  
 Eileen Walsh Devor  
 Duane & Tatiana Downey  
 Kristin & Chris Doucet  
 Diane Droste  
 Elizabeth Gruenfeld &  
 Michael Duffy  
 Margaret Dunbar  
 Judy & Jack Duncan  
 Ellen A. Dussourd  
 Matthew & Bethany Dustin  
 Cheryl Dymment & Dennis  
 O'Brien  
 Alfred & Mary Ellis  
 Laura Evans  
 Jean Fuller Farrington  
 Thomas & Winifred Faust  
 Kathleen Fay &  
 Glenn Knickrehm  
 Nancy & William  
 Fenstemacher  
 Patrice Ficken  
 Paul A. & Elizabeth Fideler  
 Laura Filkins & Sean Brown  
 Dr. Christopher Fincham  
 Janet Fink  
 Peter V. Finn  
 Carol L. Fishman  
 Barbara & George Fournier  
 Christina M. Frangos, Esq.  
 Alan Fruzzetti  
 Beverly Bridgewater Fuller  
 Stephen Garanin &  
 Bonnie Parri  
 Scott & Monica Garfield  
 John M. Garrison  
 Diane M. Garrow  
 Henry Gates  
 David Gaynor  
 Elizabeth Goetter

Claire & Brian Goldsmith  
 Jay A. Goldstein MD  
 Ronald & Judith Goodman  
 J. Gorga & L. Highland  
 Nancy Graham  
 The Graham-Merediths  
 The Graver Family  
 Brian C. Greene  
 Mary J. Greer  
 D. J. Griffith  
 Jonathan & Sandra Grindlay  
 Ron Guerriero  
 Jonathan & Victoria Guest  
 Gregory Hagan &  
 Leslie Brayton  
 Cynthia Haines  
 Hollowell-Flaherty Family  
 Giving Fund  
 George Halsey &  
 Grave Billings  
 Don & Gina Halsted  
 Joyce Hannan  
 Tricia Harris & Betty Bourret  
 David L. Hartman  
 Susan Hassinger  
 Rebecca S. Hemperly &  
 Susan Altman  
 Erin Higgins  
 Melissa Hirshson  
 Olivia Hoblitzelle  
 Ann & Richard Hogaboom  
 Peter & Bea Holland  
 Robert Holmgren  
 Lindsey V. Humes  
 Alan & Barbara Jenkins  
 Scott Jewell  
 Johnson McVeigh  
 Family Fund  
 Paul Johnson  
 Robin Johnson &  
 Russell Pinizzotto  
 Mr. & Mrs. David K. Johnston  
 Meghan Johnston  
 T Stephen Jones  
 Meredith & Robert Joss  
 Alvin Kagan  
 Susan Kattlove  
 Katherine Kaufmann  
 Susan & Louis Kern  
 Judy & Wayne Keseberg  
 Richard M. Kesner  
 Phyllis Klein  
 Richard B. Klibaner &  
 Jamie A. Sabino  
 Mark Knoll  
 Elliot Kronstein &  
 May Baldwin  
 Judy Kugel  
 M. Kuncewicz  
 Ann Kwong  
 Aaron Lamb &  
 Margrethe Flanders  
 Joseph Paul Lancaster Jr  
 Cynthia Landau &  
 David Weiner  
 Christopher Landee  
 Eileen & Merric Landy  
 David & Elizabeth Lang  
 Dianne Langeland  
 Mr. P. Scott Lapinski  
 Jeannine & Robert Largess  
 Siu-Man Kelvin Lau  
 Michelle Lee & Andrew Witt  
 Brad Leithauser  
 Roberta Lewis

Ricardo & Marla Lewitus  
*in honor of Professor Hans Lewitus*  
 Laurel Lowen  
 Marilyn & A. Stanley Lucks  
 John & Sandy Lynch  
 Svetlana Lyons  
 Jeffrey Macgillivray  
 Pauline M. MacDonald  
 Sally Makacynas  
 Allison Mann &  
   Benjamin Gundy  
 Joan & Fred Mansfield  
 Timothy D. Mansfield &  
   Marjorie A. Eiref  
 Peter & Gail Marcus  
 Josh Martin  
 CJ Mathias  
 John & Betty McCullough  
 Mr. & Mrs. Andrew McIlwraith  
 Robert Mckee  
 Nancy & Scott McKinney  
 Susan A. McLeish  
 Margaret & Bryan McQuade  
 Susan Eldredge Mead  
 Carol M. Mendillo  
 Stephanus Millard  
 Douglas Miller  
 Mr. & Mrs. Michael A. Miller  
 Nicolas Minutillo &  
   Sandra Larson  
 Mary Mitchell & Simon Fricker  
 Ross Mitchell  
 Lawrence & Ann Modisett  
 Charles & Diane Monaghan  
 Debra & Norman Moniz  
 Randolph P. Monti  
 Jeanine Mount  
 Richard J. Murnane  
 John & Jasmine Murphy  
 Paul Neuhauser  
 Deborah & Ralph Nichols  
 Eileen Nielsen *in memory of*  
   Maurice Nielsen  
 Cynthia Niiler  
 Elke U. O'Donnell  
 Bill & Martha O'Dell  
 Ann O'Malley  
 Kathryn O'Reilly  
 Janice Oberti  
 Naomi Oreskes  
 Les & Joan Ottinger  
 John M. Owen  
 James A. Paradis  
 Frederick & Anne Paulsen  
 Haley Peabody  
 Peter Pease  
 John & Alice Pepper  
 Alex Perel  
 Geroge Perkins

Anne C. Peters  
 Andrea Phan  
 Allan Pineda & Mary Manning  
 Wendy Pirsig  
 Kathleen Pollitt  
 Beatrice A. Porter  
 Rebecca & David Porteous  
 Susan Prindle *in memory of*  
   Harriet Barry  
 Victor Ratner  
 Anne P. Reece  
 James Reulbach  
 Miguel N. Rivera  
 Judith Robichaud &  
   Robert Larsen  
 Lisa A. Robinson  
 Edward Roche *in memory of*  
   Col. Paul L. Roche 3rd U.S.  
   Marine Corp. KIA  
 Anne & Karl Rookey  
 Ellen Rooney  
 Burton\* & Gloria Rose  
 Michael & Karen Rotenberg  
 Arnold Rots &  
   Betty Rots-Wisman  
 Martha Rothchild  
 Janet Rountree  
 Arthur & Barbara Safran  
 Joanne Sankus  
 Sarah Satterthwaite  
 Mary E. Sayre  
 Mary Schipa  
 Stephen & Susan Schmidt  
 Aire-Maija Schwann  
 Amy Sebell  
 Phyllis & Larry Selter  
 Arlene Semerjian  
 Liam & Kathleen Seward  
 Jeramy Shays  
 Mary Jean Shultz  
 Steven & Martha Shuster  
 Katherine & Nathaniel Sims  
 Judith Siporin & Eric H. Davis  
 Joel & Karen Sirkin  
 Katya Skazkins  
 Gretchen Slemmons  
*in memory of Marie L.*  
   Southwick  
 Laura Smeaton  
 Kathleen A. Smith  
 Gail Smith  
 William Smith  
 Steven Solomon  
 William & Barbara  
   Sommerfeld  
 Lionel & Vivian Spiro  
 Donald & Deborah  
   Springhetti  
 Doug Stewart  
 Sarah Stewart

Susan Stone  
 Ralph & Carol Stuart  
 Tricia Swift  
 Jeffrey & Linda Swope  
 Anne Tappan  
 Paul Taylor  
 Sheila & Alfred Thoman  
 Michael Frazier Thompson  
 William & Debra Thornburg  
 Helena Thornley  
 Sheila & Ronald Tiberio  
 Madeleine Timin  
 Bill & Heli Tomford  
 Frances & Peter Trafton  
 Lauren M. Towler  
 Marie Turley &  
   Christine Roche  
 Douglas Van Winkle  
 Sonia & Aashu Virmani  
 Robert & Judi VonDohlen  
 Edward Walker  
 Julia & Dexter Wang  
 Elise & Jeremy Warhaftig  
 Alvin & Judy Warren  
 Rhonda & Milton Weinstein  
 Ann Marie Lindquist & Robert  
   Weisskoff  
 Katherine Whidden  
 John E. Whipple  
 Debby Wiesen Kelly  
*in memory of*  
   Lorraine K. Wiesen  
 Sally Williard  
 Bryan Wilson  
 Jaime Wilson  
 Lynn & Daniel Winkler  
 Judith Wittenberg  
 Christian Wolff  
 Donald G. Workman &  
   Jane C. Workman  
 Susan Wyatt  
 John & Judith Wyman  
 Lucretia Yaghjian  
 Patricia Yeiser, Syracuse,  
   New York  
 Philip & Jacqueline Yen  
 Richard & Elinor Yeo  
 Charles & Elizabeth Yon  
 Kristin & Andy Zecca  
 George Zeliger  
 Robert Scott Zeller  
*in memory of John Tenhula*  
 Margaret & Charles Ziering  
 Margot Zurakowska &  
   Thomas Konopka  
 19 Anonymous Donors

\* Deceased

# CORPORATE, FOUNDATION, AND GOVERNMENT SUPPORT

## Handel and Haydn Circle Benefactors (\$50,000+)

National Endowment for the Arts  
U.S. Small Business Administration  
*One Anonymous Donor*

## Bach Circle Benefactors (\$25,000-\$49,999)

Clark Charitable Trust  
George Frederick Jewett Foundation East  
The Klarman Family Foundation  
Massachusetts Cultural Council  
The Van Otterloo Family Foundation

## Platinum Benefactors (\$10,000-\$24,999)

American Heart Association  
Boston Private, an SVB Company  
BPS Arts Expansion Fund at EdVestors  
Cambridge Trust  
Clermont Foundation  
The Hamilton Company Charitable Foundation  
Kingsbury Road Charitable Foundation  
League of American Orchestras Catalyst Fund  
Liberty Mutual Foundation  
Max and Selma Kupferberg Family Foundation  
Miss Wallace M. Leonard Foundation  
Seth Sprague Educational and  
Charitable Foundation

## Gold Benefactors (\$5,000-\$9,999)

Abbot & Dorothy H. Stevens Foundation  
Alice Willard Dorr Foundation  
The E. Nakamichi Foundation  
The Ramsey McCluskey Family Foundation  
*One Anonymous Donor*

## Silver Benefactors (\$2,500-\$4,999)

Eaton Vance Management  
The Mollie B. Foley Charitable Trust  
Howland Capital *in honor of Joe Flynn*

## Bronze Benefactors (\$1,000-\$2,499)

Choral Arts New England  
Marble Harbor Investment Council, LLC

## Supporters (Up to \$999)

Amazon Smile Foundation





“What may seem like a small gift from our estate can make a big impact on an organization.

We hope to provide a lasting legacy for H+H.”

— Peter Manson  
and Peter Durfee

## PROVIDING FOR H+H TOMORROW, STARTING TODAY

Support the music you love for generations to come by including H+H in your estate plans.

To learn more about how you can leave a lasting legacy, contact us today.

**SIGNE LINDBERG**  
**Major Gifts Officer**

617.262.1815  
[slindberg@handelandhaydn.org](mailto:slindberg@handelandhaydn.org)

### FIND OUT MORE ONLINE AT

[handelandhaydn.org/support/plannedgiving](http://handelandhaydn.org/support/plannedgiving)

HANDEL  
+ HAYDN  
SOCIETY

Have you already included H+H in your will or trust plans? Please let us know so that we can thank you and welcome you into the 1815 Society.



# 1815 SOCIETY

The Handel and Haydn Society thanks the following donors for including H+H in their long-term financial and estate plans.

Allison & William Achtmeyer  
 Mitchell Adams\*  
 Amy S. Anthony\*  
 Marie-Hélène Bernard  
 Dr. John D. Biggers\*  
 Herbert & Barbara Boothroyd  
 Rob & Nancy Bradley  
 Dr. Lee C. Bradley III\*  
 Mark C. Brockmeier &  
 Kathleen Silva  
 Reverend Thomas W. Buckley  
 Julian Bullitt  
 James Buttrick  
 Miguel\* & Sheila Canizares  
 Christopher T. Carlson  
 Jane Fisher Carlson  
 Louise & Thomas Cashman  
 Melissa Chase & K. E. Duffin  
 Fay Chandler\*  
 Harry Christophers  
 Dr. Frank O. Clark  
 Christine Coakley and  
 Michelle O'Connell  
 Patricia Collins\*  
 David & Randi Conley  
 Richard and Barbara Corkey  
 Paul Corneilson  
 Robert Cotta  
 Gregory & Anne Crisci  
 Elisabeth K. Davis\*  
 Willma H. Davis  
 Carolyn & Forbes Dewey  
 David B. Elsbree  
 Todd Estabrook  
 Deborah & Robert First  
 Stephen J. Fitzsimmons  
 Joseph M. Flynn  
 Drs. Philip &  
 Marjorie\* Gerdine  
 Anne & David Gergen  
 John W. Gorman\*

D. J. Griffith  
 Roy A. Hammer\*  
 Nancy & Bill Hammer  
 Dr. Elma Hawkins  
 Thomas Frederick Hindle\*  
 Dr. Douglas Horst &  
 Ms. Maureen Phillips  
 Rhoda & Paul Joss  
 Judith & Mark King  
 Paul Krueger\* &  
 Charles Mallard\*  
 Kathryn Kucharski  
 David Kurdzionak  
 Michael Lawler  
 Barbara Lee\*  
 Karen S. Levy  
 Signe Lindberg  
 Dr. Holger M. Luther  
 Robert Macauley  
 Jane E. Manilych &  
 Prof. W. Carl Kester  
 Peter G. Manson &  
 Peter A. Durfee  
 Joseph G. Mari  
 Franklin J. Marryott\*  
 Kathleen McGirr  
 James F. Millea &  
 Mary Ellen Bresciani  
 Janet Miner  
 Anthony T. Moosey  
 Stephen Morrissey  
 Mary & Sherif Nada  
 Janet Newell\*  
 Michael J. Oliveri  
 Barbara Goodwin Papesch\*  
 Connie B. Pawelczak  
 Mike Peluse  
 Thomas Perry\*  
 Dana & Carolyn Pope  
 Judith Lewis Rameior\*  
 Brenda Gray Reny

Art & Elaine Robins  
 Timothy & Maren Robinson  
 Robert Rowe  
 Lois C. Russell  
 Judith & Clifford Rust  
 Margaret Sagan &  
 Michael Simons  
 Holly Safford Weillbrenner  
 Dr. Michael F. Sandler  
 Mr. Michael Scott Morton  
 Robert N. Shapiro  
 Janet K. Skinner  
 Martin Small\* & Lois Lowry  
 David C. Snead  
 Drs. Robert G. Spiro\* &  
 Mary J. Spiro  
 Ms. Rheua S. Stakely\*  
 David & Sharon Steadman  
 Barbara Stedman  
 Olaf J. & Margaret L. Thorp  
 Nancy Briggs Tooke  
 Richard & Elise Tuve  
 Jane & Wat\* Tyler  
 Koen\* & Bartha van Opijnen\*  
 Judy Verhave  
 Donald F. Wahl\*  
 Ruth Ann Walker\*  
 Bruno Walser  
 Elizabeth & Robert Wax  
 Susan B. Weatherbie  
 Lucas Wegmann  
 Kathleen & Walter Weld  
 Barbara Werner &  
 Catherine Riley  
 Janet & Dean Whitla  
 John J. Winkleman Jr.  
 Jean Woodward  
*Fifteen Anonymous Donors*

*\*Deceased*

# HANDEL AND HAYDN SOCIETY ADMINISTRATION

David Snead

*President and CEO*

Rebecca Sullivan

*Senior Manager, Board Relations  
and Artistic Planning*

## Artistic

Ira Pedlikin

*Vice President of Artistic Planning*

Jesse Levine

*Personnel Manager, Production  
Manager, and Music Librarian*

*Conducting staff and programming  
consultant are listed on page 5.*

## Development

Mike Peluse

*Vice President of Development*

Chris Wright

*Senior Major Gifts Officer*

Raymond Salva

*Director of Institutional Giving*

Gabrielle Jaques

*Associate Director of Annual Giving*

Signe Lindberg

*Associate Director of Major  
and Planned Giving*

Rachel Dacus Hill

*Development Operations Manager*

Lisa Yasui

*Development Coordinator*

Vanessa Messan

*Major Gifts Coordinator*

## Finance + Administration

Lilee Dethchan

*Vice President of Finance and  
Administration*

Igor Rabovsky

*Staff Accountant*

Lindy Noecker

*Staff Accountant and  
Records Manager*

Ropes & Gray, LLP

*Counsel*

Tsoutsouras &

Company, P.C.

*Auditors and Tax Preparers*

## Marketing and Audience Services

Sally Bradford

*Vice President of Marketing  
and Communications*

Alex Speir

*Associate Director of  
Audience Services*

Chris Petre-Baumer

*Associate Director of Design*

Becca Mansfield

*Marketing Manager*

José Cuadra

*Assistant Audience  
Services Manager*

Laurin Stoler

*Calling Campaign Manager*

Jerry Waldman

*Assistant Calling  
Campaign Manager*

Benjamin Pesetsky

*Program Book Editor*

## Education + Community Engagement

Emily Yoder Reed

*Vice President of Education  
and Community Engagement*

Penny Ouellette

*Manager of Education and  
Community Engagement*

Precious Perez

*Youth Choruses Coordinator*

Elizabeth Wooton

*Youth Choruses Coordinator*

Teresa M. Neff, PhD

*Christopher Hogwood Historically  
Informed Performance Fellow*

## Interns

Alicia Gruenert

*Archives and Education*

Molly Schwall

*Education*

Caleb Walker

*Education*

## Education Program Staff

*Youth Choruses conductors  
are listed on page 5.*

## Musicianship Faculty

Laura Nevitt

*Lead Musicianship Teacher*

Jade Espina

Talia Greenberg

Kilian Mooney

## Collaborative Pianists

Leona Cheung

Andrew Mattfeld

Pei-yeh Tsai

Maria Rivera White

## Teaching Artists

Kelsey Blackstone

*Mason Elementary School*

Rachael Chagat

*Winship Elementary School*

Precious Perez

*Perkins Elementary School*

Nurt Villani

*Hurley K-8 School*

Kevin Virgilio

*Mother Caroline Academy and  
Perkins Elementary School*

## Teaching Assistants

Annina Hsieh

Devon Russo

Nathaniel Smith

# PATRON INFORMATION: ST. CECILIA PARISH, BOSTON

**For patrons with disabilities:**

St. Cecilia is fully accessible by elevator from the main entrance.

**Large print programs** are available by seeing the head usher as you enter the church.

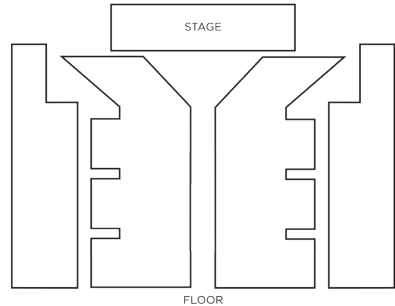
**Late seating:** Those arriving, or returning, to their seats late will be seated at the discretion of the management. Please note that you might not be seated in your original seat or section.

**Lost and found:** On the day of the event, patrons should check with H+H staff. After the event, patrons can call the Parish at 617.536.4548.

**Restrooms** are available through the Parish Hall and on lower levels. Please

refer to the H+H signage for further information.

**In case of emergency** patrons will be notified by an announcement from the stage. Should the building need to be evacuated, please follow any lighted exit sign to the street or follow alternate instructions as directed. Walk, do not run.



# PATRON INFORMATION: FIRST CHURCH IN CAMBRIDGE

**For patrons with disabilities:**

First Church is accessible via the Parish House entrance to the North of the Church. Please note that the Balcony is not accessible.

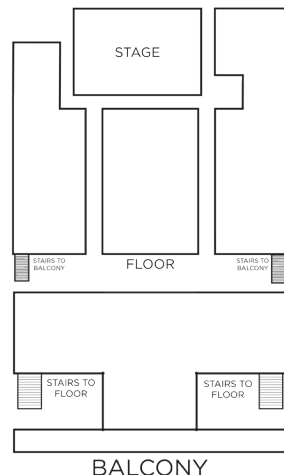
**Large print programs** are available by seeing the head usher as you enter the church.

**Late seating:** Those arriving, or returning, to their seats late will be seated at the discretion of the management. Please note that you might not be seated in your original seat or section.

**Lost and found:** On the day of the event, patrons should check with the Sexton on duty. After the event, patrons can call the Sexton at 617.642.3980.

**Restrooms** are located in the Parish House past the common area and up the ramp.

**In case of emergency** patrons will be notified by an announcement from the stage. Should the building need to be evacuated, please follow any lighted exit sign to the street or follow alternate instructions as directed. Walk, do not run.



# HANDEL AND HAYDN SOCIETY

## GENERAL INFORMATION

9 Harcourt Street  
Boston, MA 02116

[handelandhaydn.org](http://handelandhaydn.org)  
[info@handelandhaydn.org](mailto:info@handelandhaydn.org)

617.262.1815

### Box Office

Monday–Friday, 9am–5pm  
617.266.3605  
[boxoffice@handelandhaydn.org](mailto:boxoffice@handelandhaydn.org)

### Group Tickets

Groups of 10 or more save 20%.  
[groups@handelandhaydn.org](mailto:groups@handelandhaydn.org)

### Musically Speaking





Join Historically Informed Performance Fellow Teresa Neff for an engaging exploration of the music and instruments featured in concert.

Talks begin 45 minutes prior to the performances on Friday and Saturday evenings. There is no talk before the Sunday performance for Bach Christmas.

### Musically Speaking Locations

Symphony Hall: Higginson Hall  
(in the Cohen Wing)  
Other Venues: On Stage

### Connect with H+H

 [facebook.com/handelandhaydn](https://facebook.com/handelandhaydn)  
 [twitter.com/handelandhaydn](https://twitter.com/handelandhaydn)  
 [instagram.com/handelandhaydn](https://instagram.com/handelandhaydn)  
 [youtube.com/handelandhaydn](https://youtube.com/handelandhaydn)

### Merchandise

The Handel and Haydn Society offers gift items and recordings featuring the Orchestra and Chorus and guest artists throughout the season. Your purchases help support our education and artistic programming.

### Shop Locations

Symphony Hall: Cohen Wing near Higginson Hall

Merchandise is also available online at [handelandhaydn.org](http://handelandhaydn.org).



### Subscribe Today!

Join us for the 2021–22 Season.  
Choose your subscription at [handelandhaydn.org](http://handelandhaydn.org).

# BOSTON SYMPHONY ORCHESTRA

ANDRIS NELSONS MUSIC DIRECTOR

**REUNITING IN CONCERT**  
**SEPTEMBER 30 – APRIL 30**

**BSO.ORG**

**BANK OF AMERICA**

SEASON SPONSOR





JOIN US FOR OUR NEXT CONCERT



# BEETHOVEN SYMPHONY NO. 7

**FRI, JAN 7 AT 7:30PM**  
**SUN, JAN 9 AT 3:00PM**

**SYMPHONY HALL**

**Bologne:** Overture to *L'amant Anonyme*

**Voříšek:** Symphony in D Major

**Beethoven:** Symphony No. 7

**Václav Luks**, *conductor*

**H+H Orchestra**

---

**HANDEL+HAYDN SOCIETY**

*handelandhaydn.org*

617.266.3605